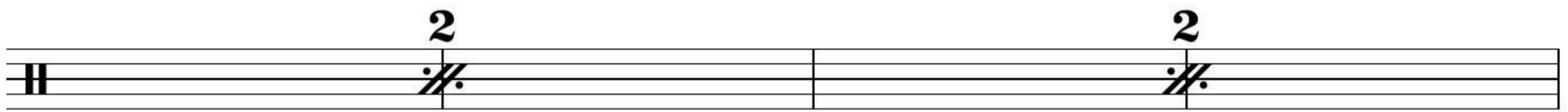
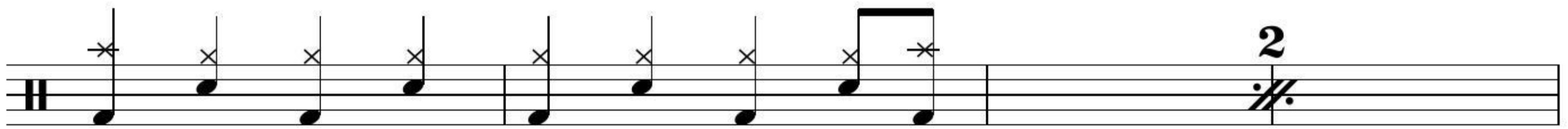
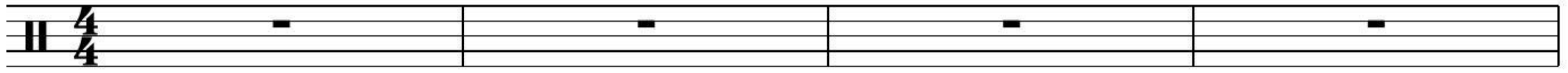


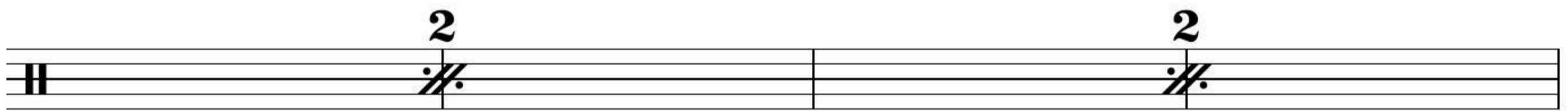
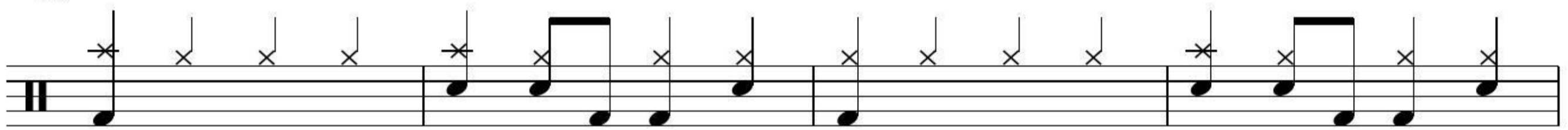
# YOUR TOUCH

THE BLACK KEYS

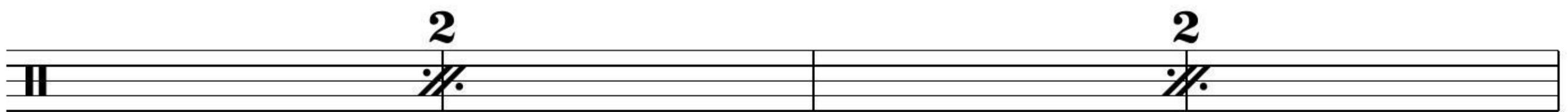
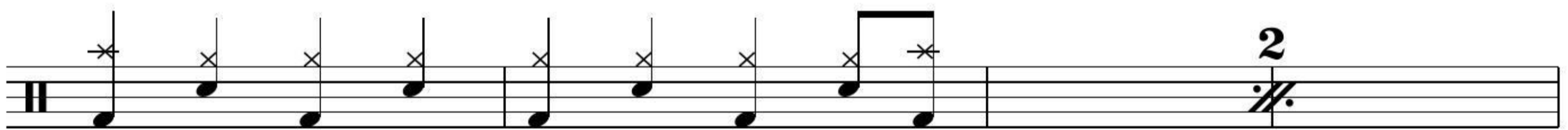
♩ = 117 **INTRO** Gtr.



## **VERSE**

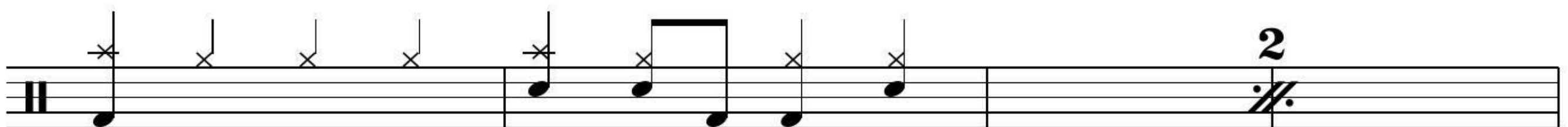


## **CHORUS**



D.S. al Fine

## **GUITAR SOLO**



2 YOUR TOUCH

A musical staff with two double bar lines. Above the first double bar line is a '2' symbol. Above the second double bar line is another '2' symbol. Each '2' symbol is positioned above a double bar line with repeat dots (//).

BREAK

A musical staff with a treble clef. The first measure contains a quarter note with a star above it, followed by a fermata. The next three measures are empty.

A musical staff with a treble clef. It contains a sequence of notes with stems and flags. The final measure has a double bar line with a '2' symbol above it and repeat dots (//).

VERSE

A musical staff with a treble clef. It contains a sequence of notes with stems and flags. The staff ends with a double bar line.

A musical staff with two double bar lines. Above the first double bar line is a '2' symbol. Above the second double bar line is another '2' symbol. Each '2' symbol is positioned above a double bar line with repeat dots (//).

OUTRO

A musical staff with a treble clef. It contains a sequence of notes with stems and flags. The final measure has a double bar line with a '2' symbol above it and repeat dots (//).

A musical staff with two double bar lines. Above the first double bar line is a '2' symbol. Above the second double bar line is another '2' symbol. Each '2' symbol is positioned above a double bar line with repeat dots (//). The staff ends with a quarter note with a star above it and a fermata.