

WORKING MAN

RUSH

♩ = 80 INTRO

VERSE

4/4 Rest 4 Bars

N.C.

CHORUS

VERSE

N.C.

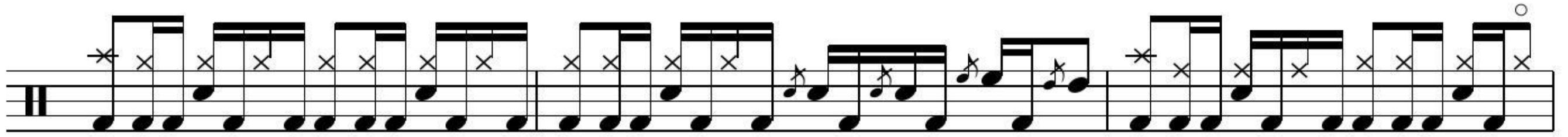
CHORUS

6

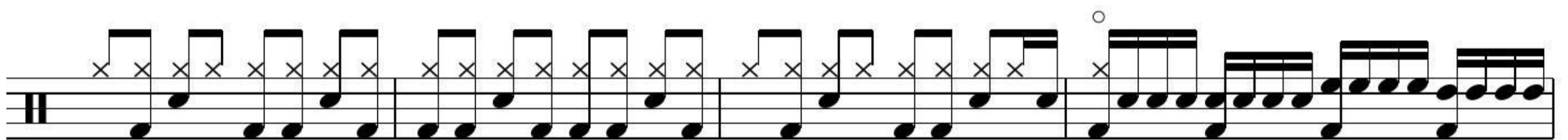
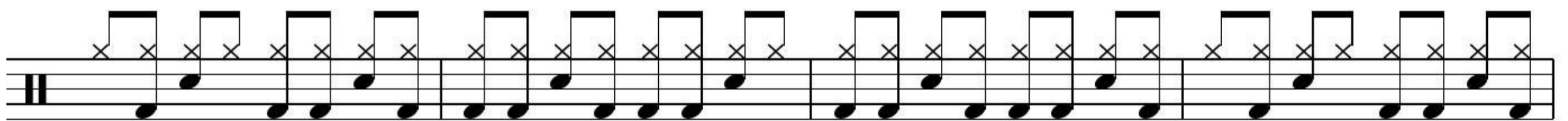
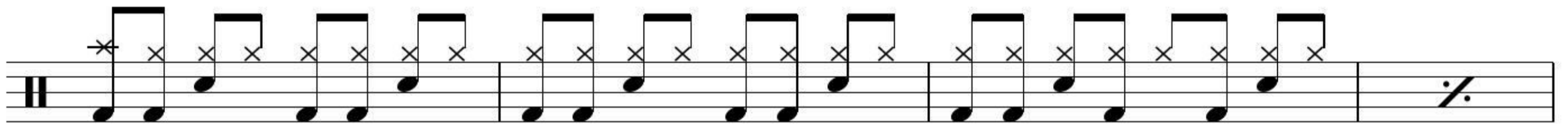
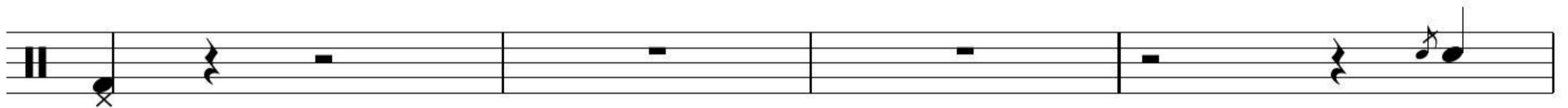
GUITAR SOLO

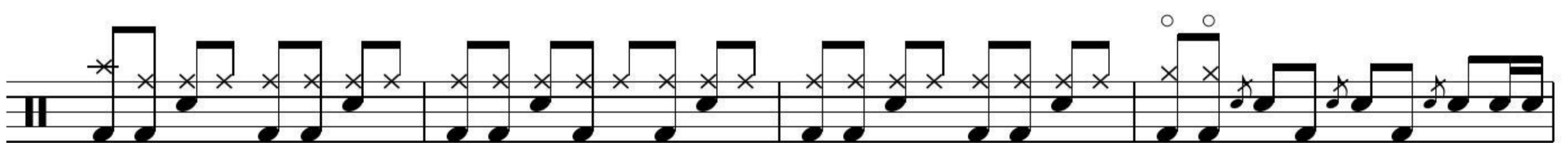
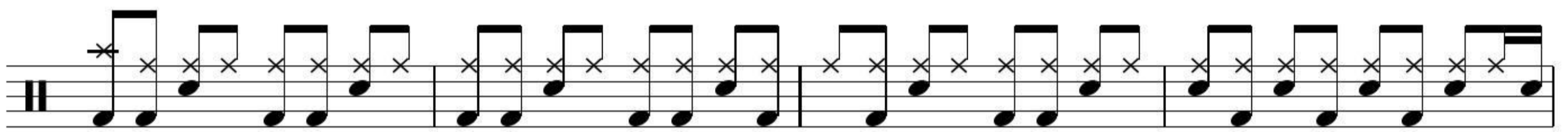
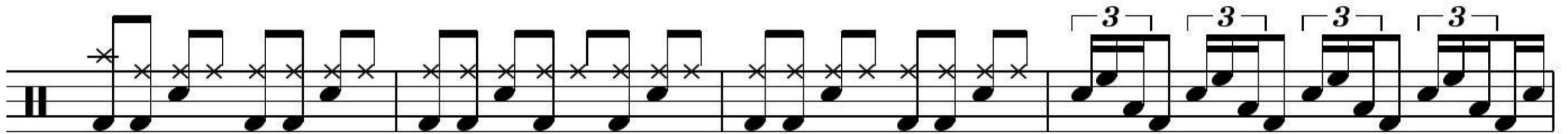
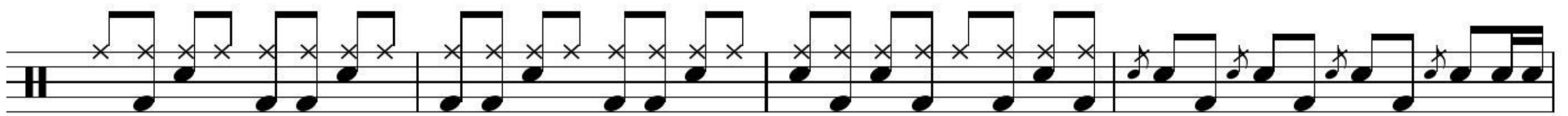
2 WORKING MAN

CHORUS

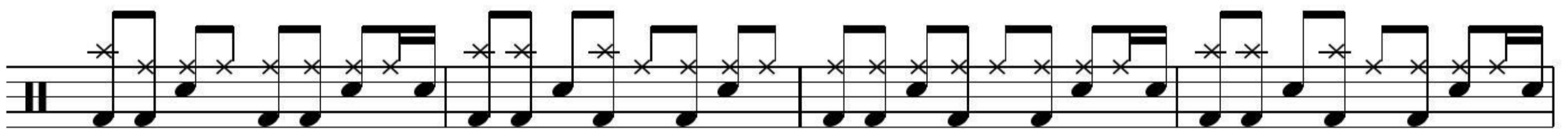


Tempo change

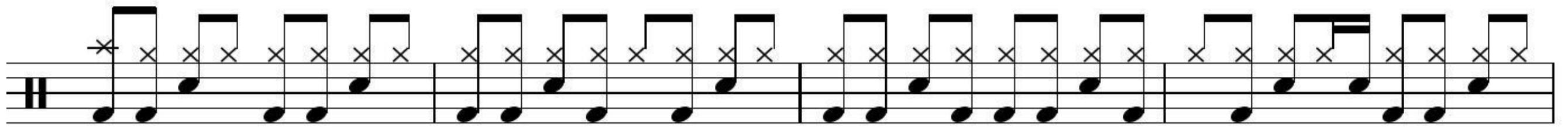




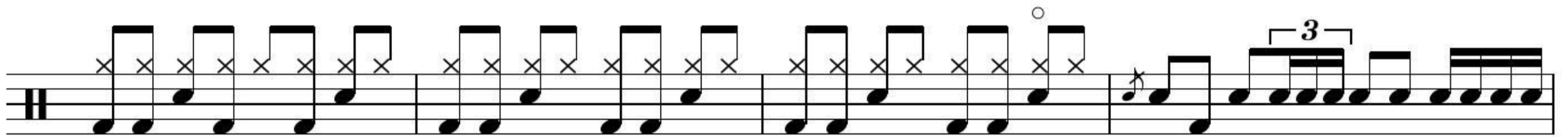
HIT SECTION



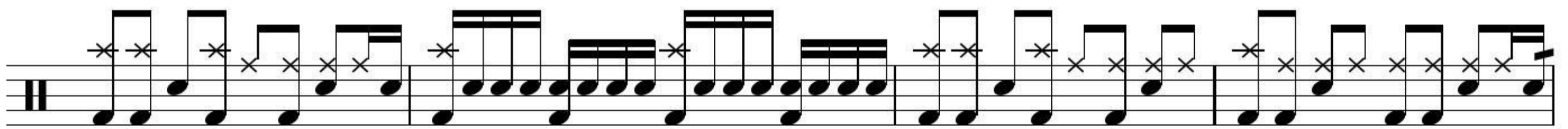
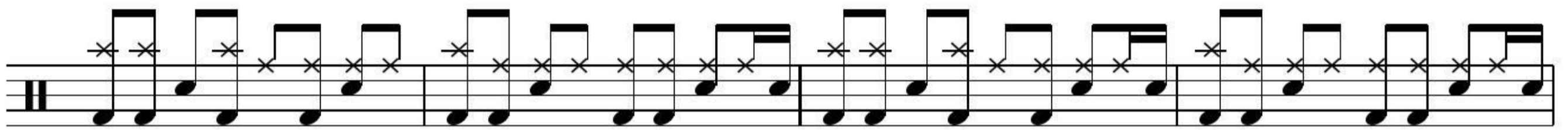
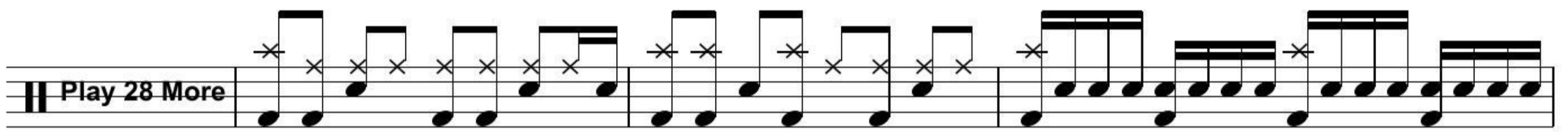
4 WORKING MAN



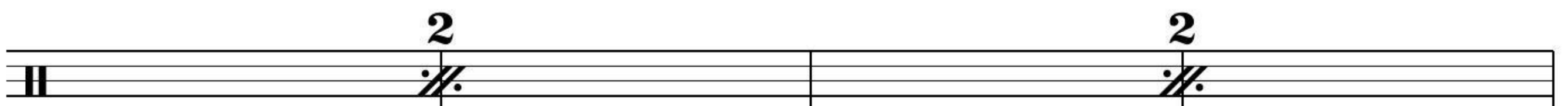
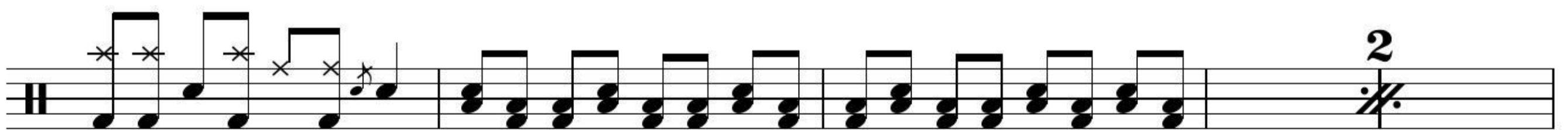
GUITAR SOLO

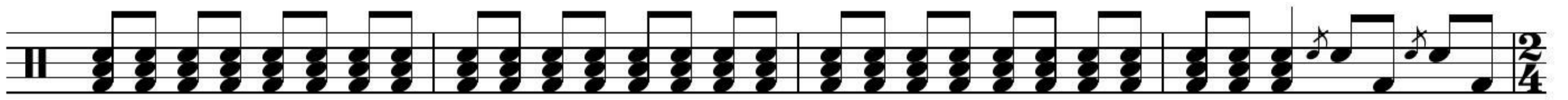


HIT SECTION

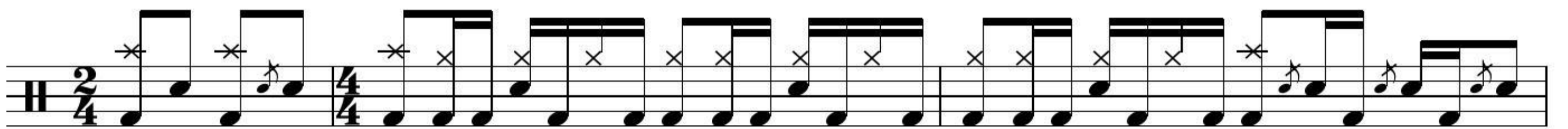


BRIDGE

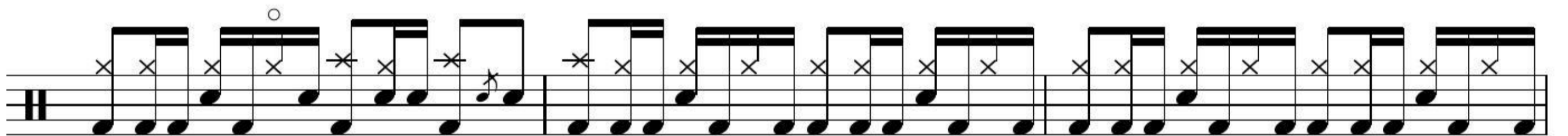
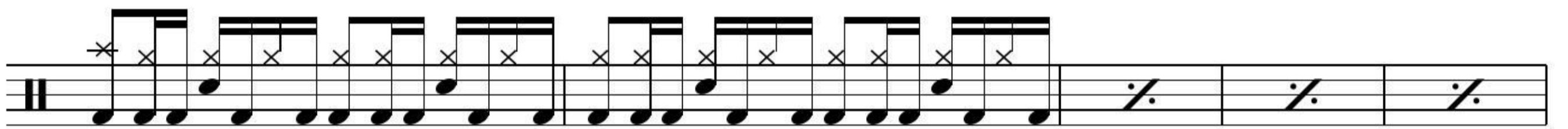




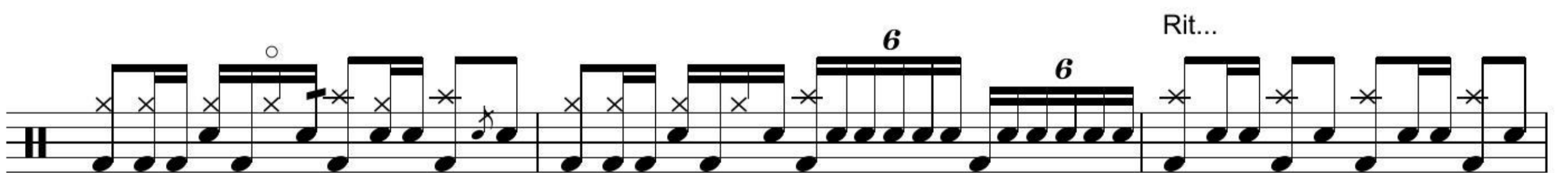
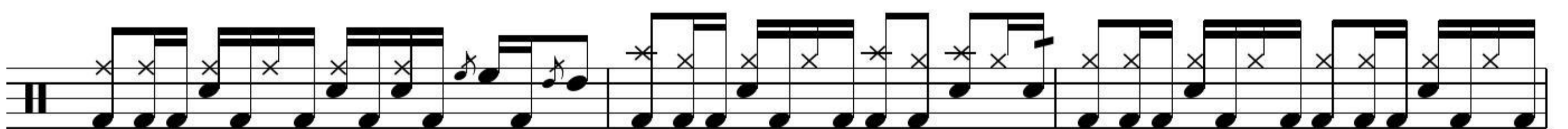
Tempo change



VERSE



OUTRO



6 WORKING MAN

A musical score for a piece titled "Working Man". The score is written on a single staff. It begins with a double bar line and a key signature of one sharp (F#). The first measure contains a whole note chord with a circled 'x' above it. The second measure contains a sixteenth-note triplet. The third measure contains a sixteenth-note triplet. The fourth measure contains a sixteenth-note triplet. The fifth measure contains a quarter note, an eighth note, and a quarter note. The sixth measure contains a quarter note, a quarter rest, and a quarter note. The seventh measure contains a quarter note, a quarter note, and a quarter note. The eighth measure contains a quarter note, a quarter note, and a quarter note. The ninth measure contains a quarter note, a quarter note, and a quarter note. The tenth measure contains a quarter note, a quarter note, and a quarter note. The eleventh measure contains a quarter note, a quarter note, and a quarter note. The twelfth measure contains a quarter note, a quarter note, and a quarter note. The thirteenth measure contains a quarter note, a quarter note, and a quarter note. The fourteenth measure contains a quarter note, a quarter note, and a quarter note. The fifteenth measure contains a quarter note, a quarter note, and a quarter note. The sixteenth measure contains a quarter note, a quarter note, and a quarter note. The score ends with a double bar line and the word "Fine" written below it.