

TOM SAWYER

RUSH

♩ = 87 VERSE

First staff of the Verse section. It begins with a treble clef and a 4/4 time signature. The notation consists of a series of eighth-note chords, each with a slash through it, indicating a specific guitar fretting pattern. The chords are arranged in a sequence that repeats every two measures.

CHORUS

First staff of the Chorus section. It continues with the same eighth-note chord patterns as the verse, but with some variations in the sequence and the inclusion of a circled 'o' above certain notes, likely indicating a specific guitar technique or a different fretting.

Second staff of the Chorus section, continuing the eighth-note chord patterns and variations from the first staff.

Third staff of the Chorus section, continuing the eighth-note chord patterns and variations.

BRIDGE

First staff of the Bridge section. The notation changes to include quarter notes and eighth notes, with some chords still marked with slashes. It ends with a double bar line and a repeat sign.

Second staff of the Bridge section, continuing the notation from the first staff.

Third staff of the Bridge section, continuing the notation from the first staff.

Fourth staff of the Bridge section, continuing the notation from the first staff.

2 TOM SAWYER

A musical staff with a double bar line on the left. It contains a sequence of rhythmic notation: a quarter note with an asterisk, followed by eighth notes, quarter notes, and eighth notes with asterisks.

VERSE

A musical staff with a double bar line on the left. It begins with a quarter note with an asterisk, followed by eighth notes, quarter notes, and eighth notes with asterisks. The notation continues with eighth notes and quarter notes.

INST

A musical staff with a double bar line on the left. It features a series of eighth notes with 'x' marks above them, indicating fretted notes. A double bar line with a repeat sign is followed by a 7/8 time signature and a quarter note with an asterisk, followed by eighth notes.

4X

A musical staff with a double bar line on the left. It contains a sequence of eighth notes with 'x' marks above them. A double bar line with a repeat sign and the number '4' above it indicates a four-measure repeat. The notation continues with eighth notes and quarter notes.

A musical staff with a double bar line on the left. It contains a sequence of eighth notes with 'x' marks above them. The staff ends with a 7/16 time signature.

A musical staff with a double bar line on the left. It contains a sequence of eighth notes with 'x' marks above them. The staff includes a 7/16 time signature, a 3/8 time signature, and another 7/8 time signature.

A musical staff with a double bar line on the left. It contains a sequence of eighth notes with 'x' marks above them. The staff includes a 7/16 time signature, a 3/8 time signature, and another 7/8 time signature.

A musical staff with a double bar line on the left. It contains a sequence of eighth notes with 'x' marks above them. The staff includes a 7/8 time signature and a 3/4 time signature.

4 TOM SAWYER

Musical staff with guitar notation. It features a series of sixteenth-note chords with 'x' marks above them. A triplet of sixteenth notes is marked with a '6' above it. The staff ends with a triplet of eighth notes marked with a '3' above it.

Musical staff with guitar notation. It features a series of sixteenth-note chords with 'x' marks above them. A triplet of eighth notes is marked with a '3' above it.

Musical staff with guitar notation. It features a series of eighth-note chords with 'x' marks above them. A triplet of eighth notes is marked with a '3' above it.

VERSE

Musical staff with guitar notation for the verse section. It features a series of sixteenth-note chords with 'x' marks above them. A circled 'o' is placed above one of the chords.

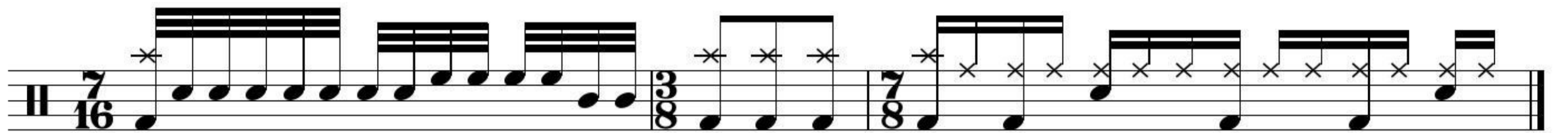
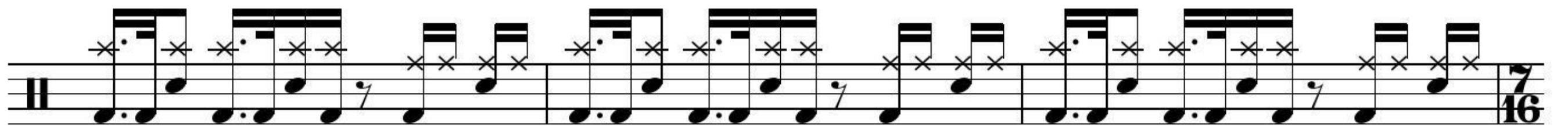
INST

Musical staff with guitar notation for the instrumental section. It features a series of sixteenth-note chords with 'x' marks above them. A circled 'o' is placed above one of the chords. The staff ends with a 7/8 time signature.

Musical staff with guitar notation for the instrumental section. It features a series of sixteenth-note chords with 'x' marks above them. A circled 'o' is placed above one of the chords. The staff includes 7/16, 3/8, and 7/8 time signatures.

Musical staff with guitar notation for the instrumental section. It features a series of sixteenth-note chords with 'x' marks above them. The staff starts with a 7/8 time signature.

Musical staff with guitar notation for the instrumental section. It features a series of sixteenth-note chords with 'x' marks above them. The staff includes 7/16, 3/8, and 7/8 time signatures.



Fade out