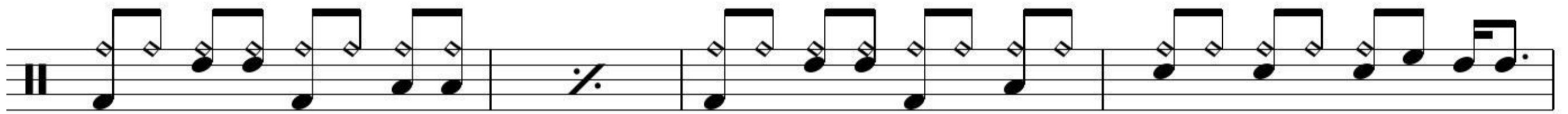


TICKETS TO WATERFALLS

JACK BRUCE

♩ = 148  INTRO Piano



A SECTION



B SECTION



2 TICKETS TO WATERFALLS

⊕

Musical notation for the first two staves of the piece. The first staff contains a sequence of notes with some rests and a slash. The second staff continues the sequence with more notes and rests.

GUITAR SOLO

Musical notation for the guitar solo section, consisting of two staves. The first staff has a series of notes with 'x' marks above them. The second staff has a first ending bracket and a second ending bracket.

⊕

Musical notation for the section following the guitar solo, consisting of one staff. It includes a "D.S. al Coda" instruction.

OUTRO

Musical notation for the outro section, consisting of three staves. The final staff ends with the instruction "To fade".