

THE TAKE OVER, THE BREAKS OVER

FALL OUT BOY

♩ = 150 INTRO

Musical notation for the Intro section, 4/4 time signature. The notation consists of a single staff with a treble clef and a key signature of one flat. The tempo is marked as ♩ = 150. The music features a repeating eighth-note pattern with 'x' marks above the notes, indicating muted guitar. There are two circled notes in the second and fourth measures.

VERSE

Musical notation for the first line of the Verse section. The notation consists of a single staff with a treble clef and a key signature of one flat. The music features a repeating eighth-note pattern with 'x' marks above the notes, indicating muted guitar. There are two circled notes in the second and fourth measures.

Musical notation for the second line of the Verse section. The notation consists of a single staff with a treble clef and a key signature of one flat. The music features a repeating eighth-note pattern with 'x' marks above the notes, indicating muted guitar. There is one circled note in the second measure.

PRE CHORUS

Musical notation for the first line of the Pre Chorus section. The notation consists of a single staff with a treble clef and a key signature of one flat. The music features a repeating eighth-note pattern with 'x' marks above the notes, indicating muted guitar. The section ends with a double bar line and a repeat sign, followed by '3X'.

Musical notation for the second line of the Pre Chorus section. The notation consists of a single staff with a treble clef and a key signature of one flat. The music features a repeating eighth-note pattern with 'x' marks above the notes, indicating muted guitar.

CHORUS

Musical notation for the first line of the Chorus section. The notation consists of a single staff with a treble clef and a key signature of one flat. The music features a repeating eighth-note pattern with 'x' marks above the notes, indicating muted guitar.

Musical notation for the second line of the Chorus section. The notation consists of a single staff with a treble clef and a key signature of one flat. The music features a repeating eighth-note pattern with 'x' marks above the notes, indicating muted guitar. A circled note is present in the second measure.

Musical notation for the third line of the Chorus section. The notation consists of a single staff with a treble clef and a key signature of one flat. The music features a repeating eighth-note pattern with 'x' marks above the notes, indicating muted guitar. There is one circled note in the second measure.

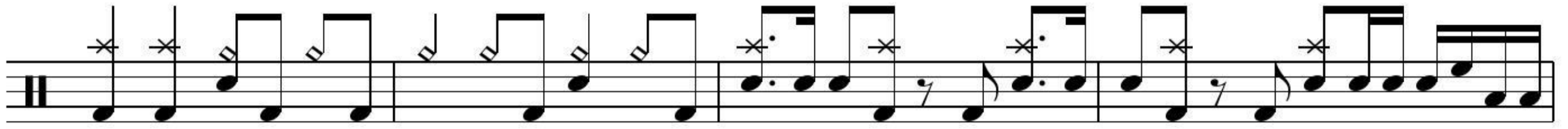
D.S. al Coda

2 THE TAKE OVER, THE BREAKS OVER

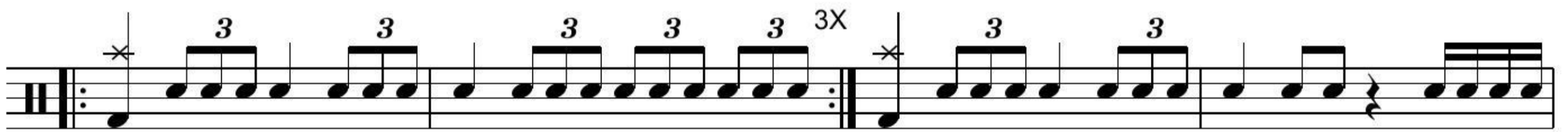
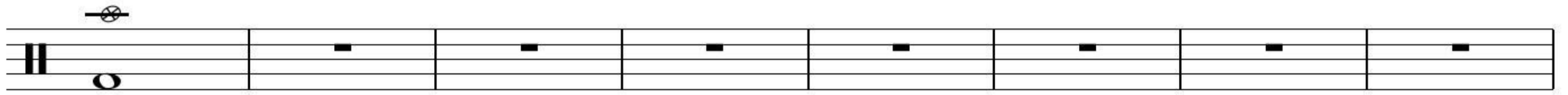


BRIDGE

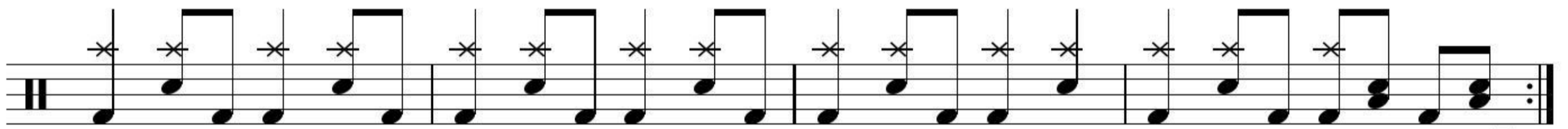
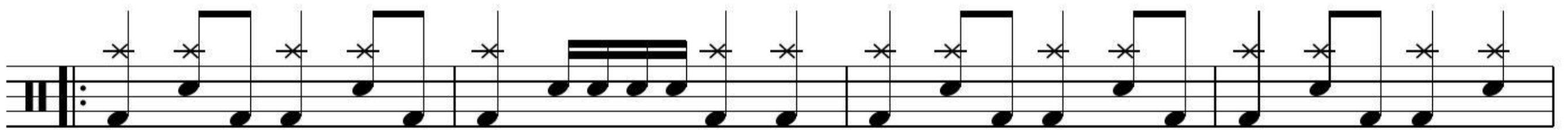
GUITAR SOLO



BREAK



OUTRO



Fine