

THE HELL SONG

SUM 41

♩ = 174 INTRO

First staff of music for the Intro section, featuring a 4/4 time signature and a series of eighth notes with 'x' marks above them.

Second staff of music for the Intro section, continuing the eighth note pattern.

Third staff of music for the Intro section, continuing the eighth note pattern.

VERSE

First staff of music for the Verse section, continuing the eighth note pattern.

Second staff of music for the Verse section, continuing the eighth note pattern.

Third staff of music for the Verse section, continuing the eighth note pattern.

Fourth staff of music for the Verse section, continuing the eighth note pattern.

BRIDGE

First staff of music for the Bridge section, continuing the eighth note pattern.

2 THE HELL SONG

Musical notation for the first section of the song. It consists of a single staff with a treble clef and a key signature of one sharp (F#). The notation includes a series of eighth and sixteenth notes, some with 'x' marks above them, indicating muted notes. The section concludes with the instruction "D.S. al Coda".

D.S. al Coda

CHORUS



The first line of the chorus musical notation, featuring a treble clef, a key signature of one sharp, and a series of eighth and sixteenth notes with 'x' marks.

The second line of the chorus musical notation, continuing the sequence of eighth and sixteenth notes with 'x' marks.

The third line of the chorus musical notation, continuing the sequence of eighth and sixteenth notes with 'x' marks.

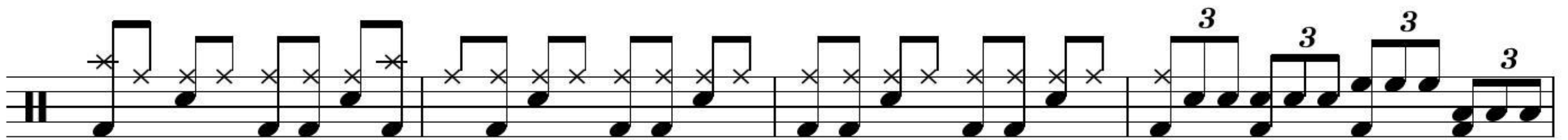
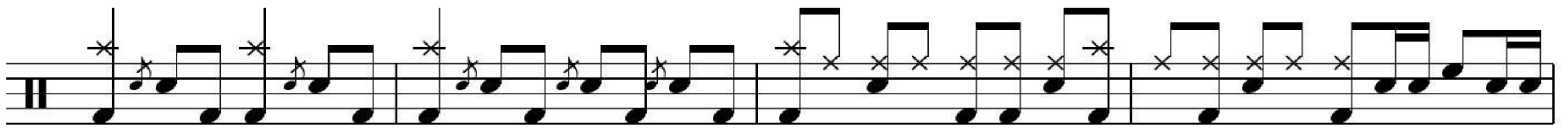
The fourth line of the chorus musical notation, continuing the sequence of eighth and sixteenth notes with 'x' marks.

The fifth line of the chorus musical notation, concluding with a double bar line and a final note.

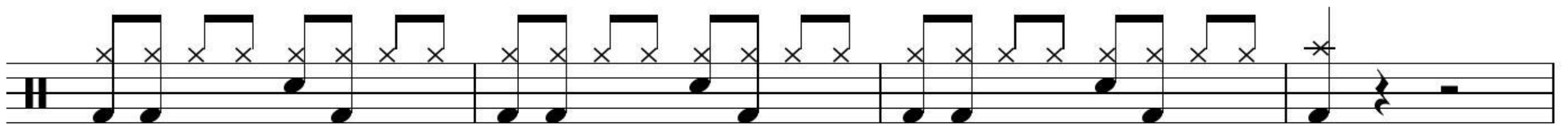
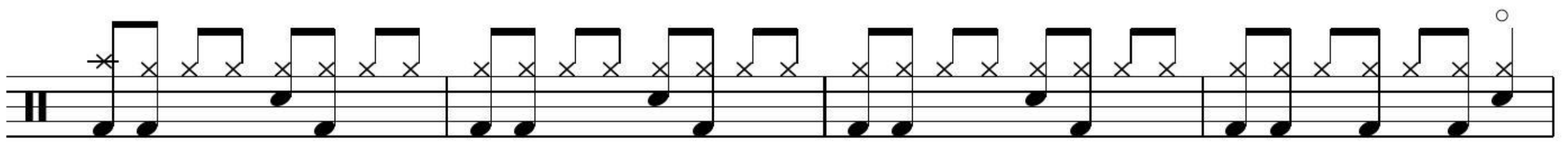
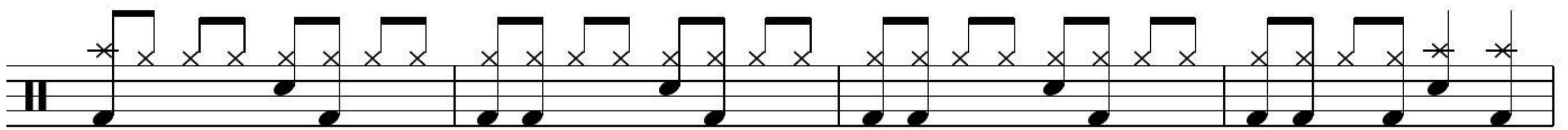
GUITAR SOLO

The first line of the guitar solo musical notation, featuring a treble clef, a key signature of one sharp, and a series of eighth and sixteenth notes with 'x' marks.

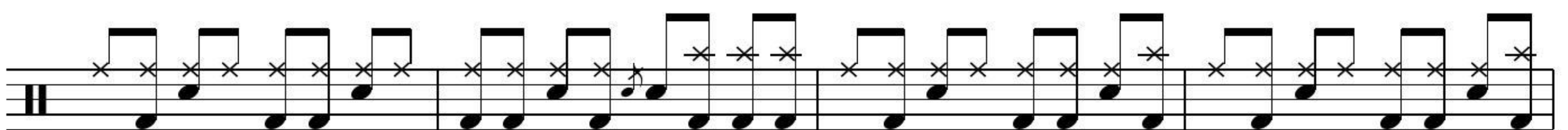
The second line of the guitar solo musical notation, continuing the sequence of eighth and sixteenth notes with 'x' marks.

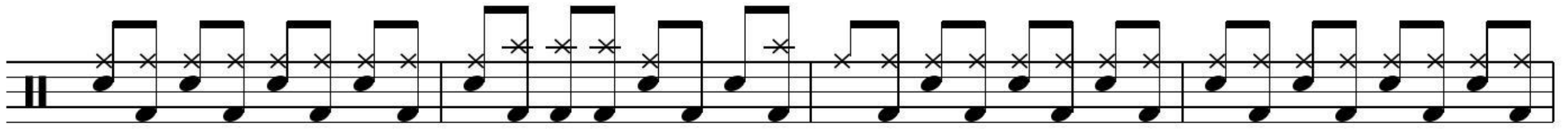


BREAKDOWN



CHORUS





OUTRO

