

THE DIARY OF JANE

BREAKING BENJAMIN

$\text{♩} = 83$ INTRO

The first line of the Intro section consists of two staves. The first staff is in 4/4 time and begins with two measures of whole rests. The second staff continues the melody with eighth and sixteenth notes, including some beamed sixteenth notes and a final note with a circled 'o' above it.

The second line of the Intro section consists of two staves. The first staff continues the melody with eighth and sixteenth notes, including a circled 'o' above a note. The second staff continues the melody with eighth and sixteenth notes.

The third line of the Intro section consists of two staves. The first staff continues the melody with eighth and sixteenth notes. The second staff continues the melody with eighth and sixteenth notes.

The fourth line of the Intro section consists of two staves. The first staff continues the melody with eighth and sixteenth notes. The second staff continues the melody with eighth and sixteenth notes. A fermata symbol is placed above the first staff.

VERSE

The first line of the Verse section consists of two staves. The first staff continues the melody with eighth and sixteenth notes. The second staff continues the melody with eighth and sixteenth notes.

The second line of the Verse section consists of two staves. The first staff continues the melody with eighth and sixteenth notes. The second staff continues the melody with eighth and sixteenth notes.

CHORUS

The first line of the Chorus section consists of two staves. The first staff continues the melody with eighth and sixteenth notes. The second staff continues the melody with eighth and sixteenth notes.

The second line of the Chorus section consists of two staves. The first staff continues the melody with eighth and sixteenth notes. The second staff continues the melody with eighth and sixteenth notes. A fermata symbol is placed above the first staff.

2 THE DIARY OF JANE



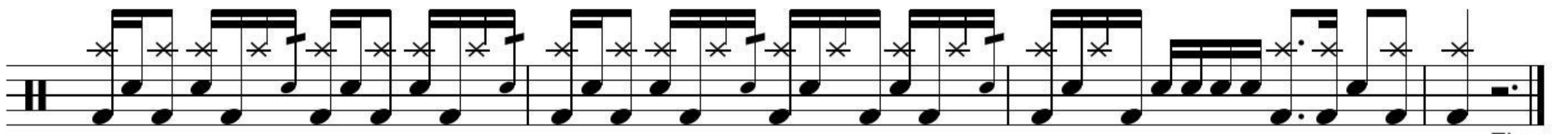
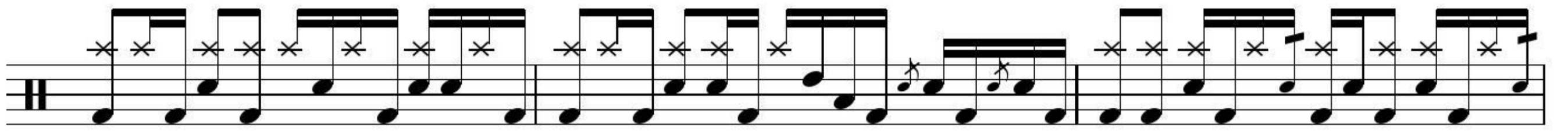
D.S. al Coda

BREAK

BRIDGE

CHORUS

OUTRO



Fine