

SUNDAY BLOODY SUNDAY

U2

♩ = 98 INTRO

VERSE

BRIDGE

VERSE

2 SUNDAY BLOODY SUNDAY

A musical staff in treble clef with a key signature of one flat. It contains a sequence of guitar chord diagrams (represented by 'x' marks) and a melodic line. The staff ends with a double bar line and a '2' above it, indicating a second ending.

CHORUS

A musical staff in treble clef with a key signature of one flat, labeled 'CHORUS'. It contains a sequence of guitar chord diagrams and a melodic line. The staff ends with a double bar line and a '2' above it, indicating a second ending. A circled cross symbol is positioned to the right of the staff.

A musical staff in treble clef with a key signature of one flat, containing a sequence of guitar chord diagrams and a melodic line.

A musical staff in treble clef with a key signature of one flat, containing a sequence of guitar chord diagrams and a melodic line. A circled cross symbol is positioned above the staff.

D.S. al Coda

A musical staff in treble clef with a key signature of one flat, containing a sequence of guitar chord diagrams and a melodic line.

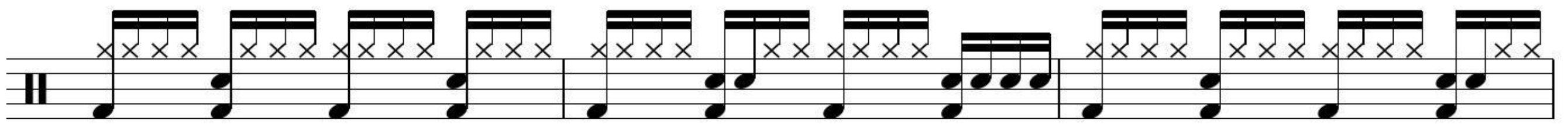
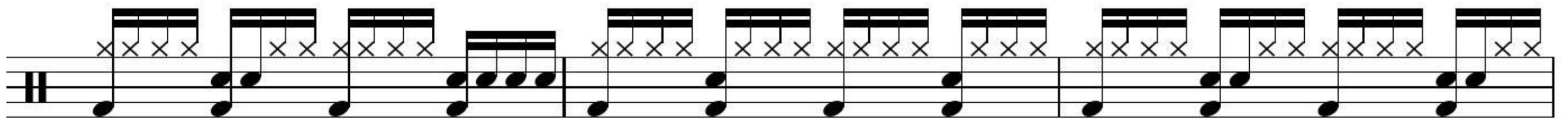
BRIDGE

A musical staff in treble clef with a key signature of one flat, labeled 'BRIDGE'. It contains a sequence of guitar chord diagrams and a melodic line.

A musical staff in treble clef with a key signature of one flat, containing a sequence of guitar chord diagrams and a melodic line.

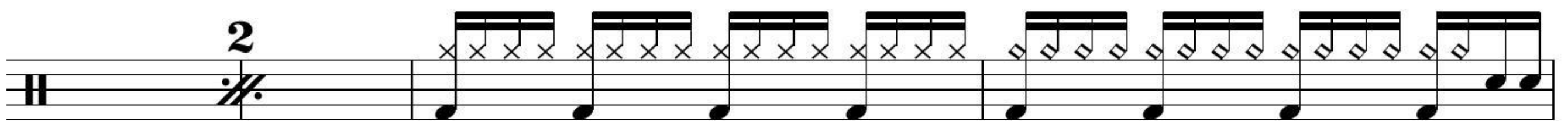
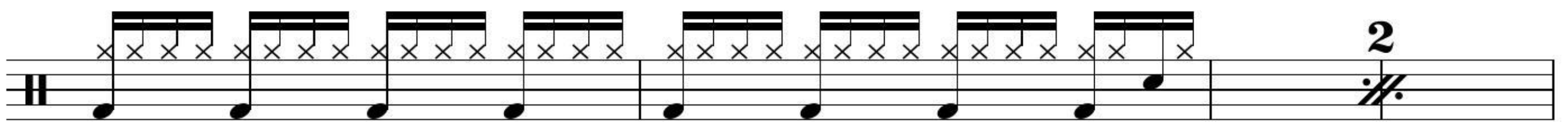
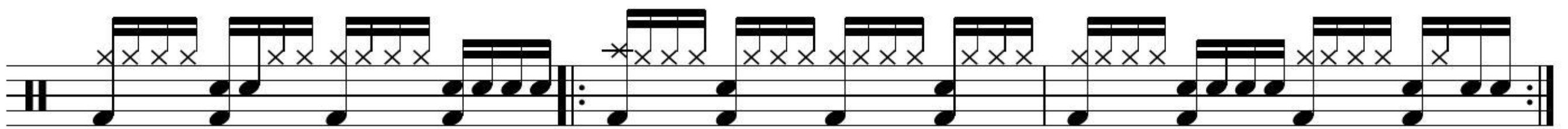
INST.

A musical staff in treble clef with a key signature of one flat, labeled 'INST.'. It contains a sequence of guitar chord diagrams and a melodic line.

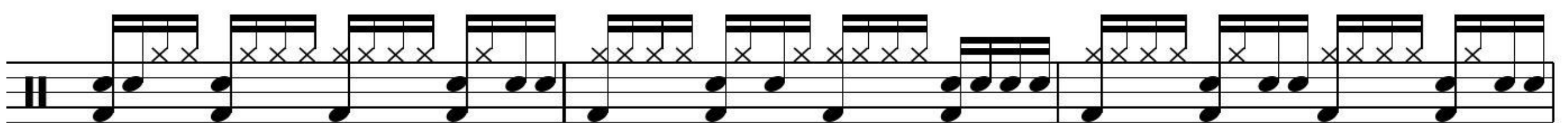


INTERLUDE Improv.

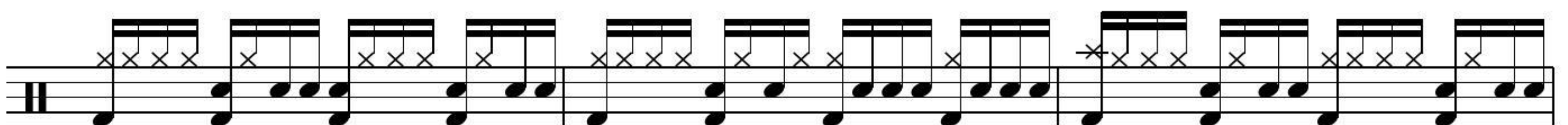
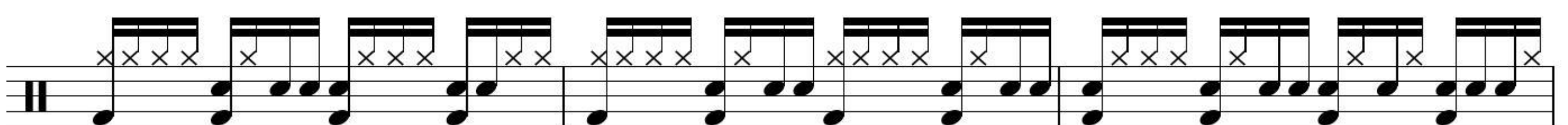
6X



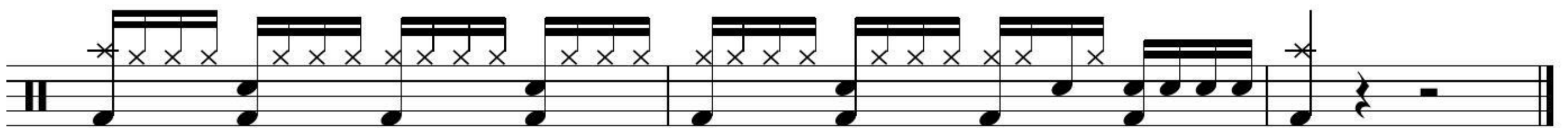
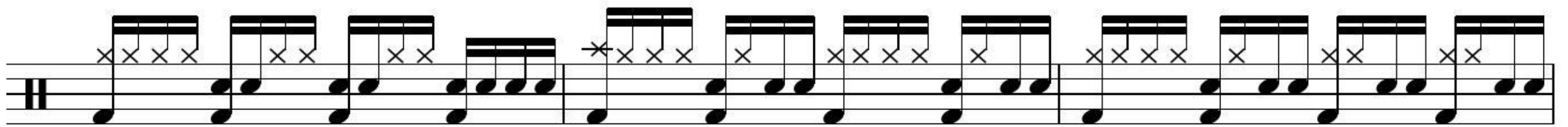
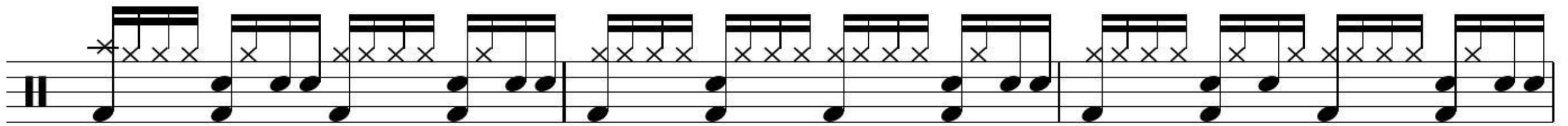
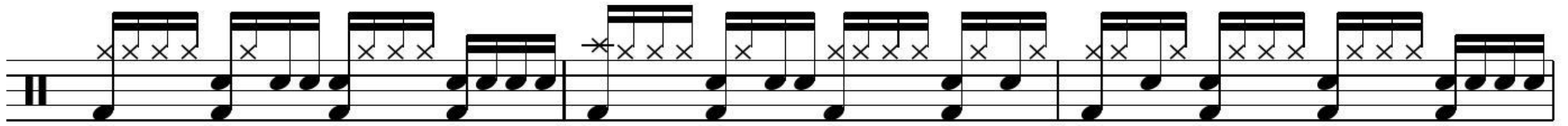
FIDDLE SOLO



OUTRO



4 SUNDAY BLOODY SUNDAY



Fine