

SEX ON FIRE

KINGS OF LEON

♩ = 153 INTRO Gtr.

Intro guitar staff in 4/4 time. It consists of four measures of whole rests, followed by a quarter rest and a quarter note G4 with a natural sign.

Intro guitar staff with a 3X repeat sign. It starts with a double bar line, followed by four measures of eighth notes with x marks, then three measures of whole rests with repeat signs, and ends with a double bar line.

VERSE

Verse guitar staff 1. It starts with a double bar line, followed by four measures of eighth notes with x marks, then three measures of whole rests with repeat signs, and ends with a double bar line.

Verse guitar staff 2. It starts with a double bar line, followed by four measures of eighth notes with x marks, then three measures of whole rests with repeat signs, and ends with a double bar line.

Verse guitar staff 3. It starts with a double bar line, followed by two measures of whole rests with repeat signs, then four measures of eighth notes with x marks, then four measures of eighth notes with diamond marks, and ends with a Coda symbol.

CHORUS

Chorus guitar staff 1. It starts with a double bar line, followed by four measures of eighth notes with x marks, then three measures of whole rests with repeat signs, and ends with a double bar line. The text "N.C." is written above the second measure of the whole rests.

D.S. al Coda

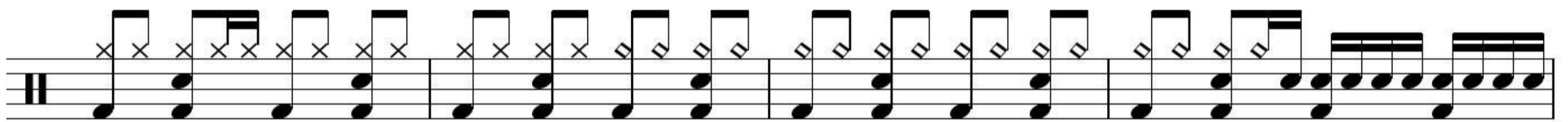
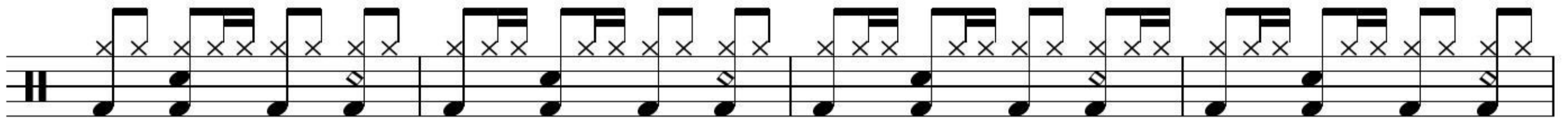
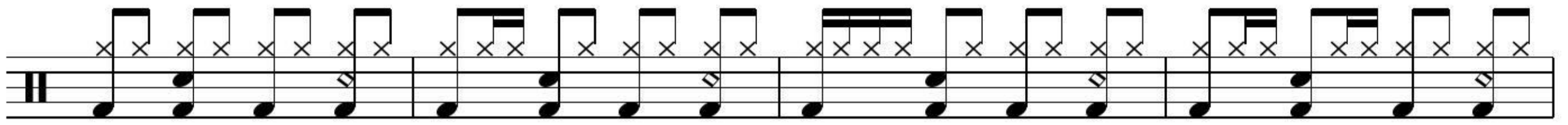
CHORUS

Chorus guitar staff 2. It starts with a Coda symbol, followed by four measures of eighth notes with x marks, then three measures of whole rests with repeat signs, and ends with four measures of eighth notes with x marks. The text "N.C." is written above the second measure of the whole rests.

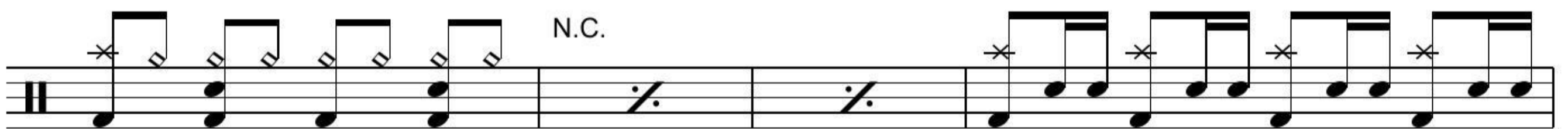
Chorus guitar staff 3. It starts with a double bar line, followed by four measures of eighth notes with x marks, then three measures of whole rests with repeat signs, and ends with a double bar line. The text "N.C." is written above the second measure of the whole rests.

2 SEX ON FIRE

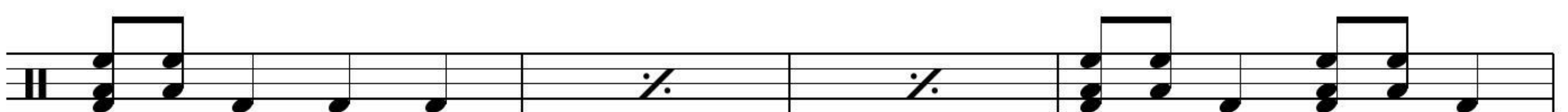
VERSE

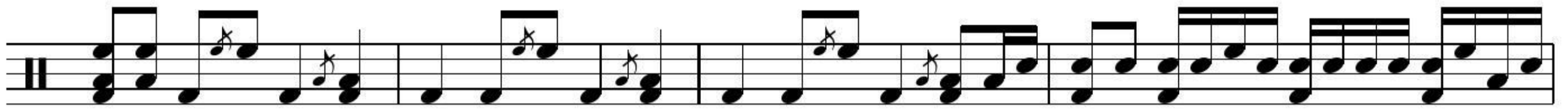


CHORUS

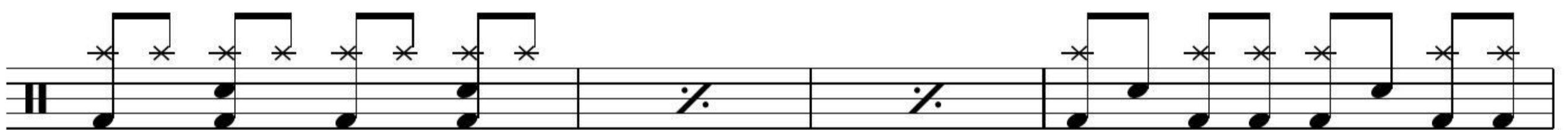
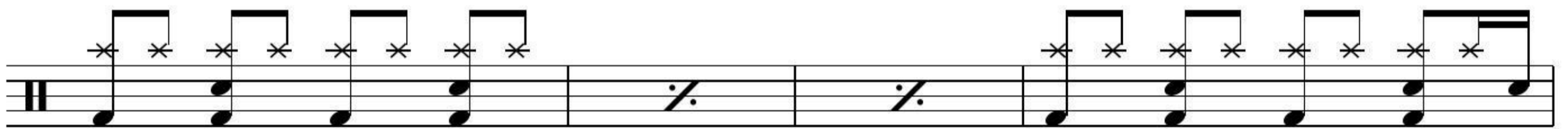
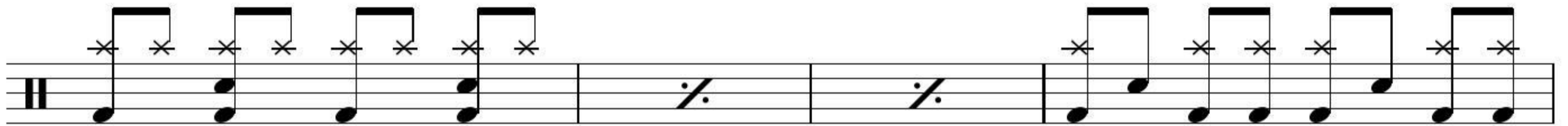


BREAKDOWN





OUTRO CHORUS



Fine