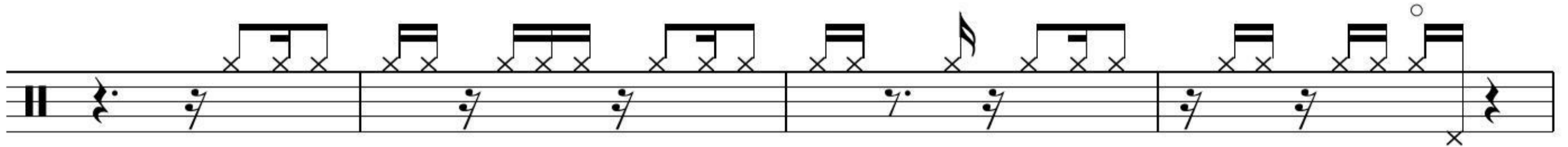
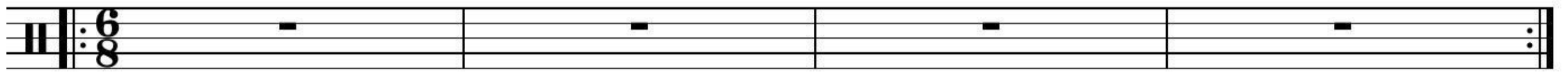


SATTELITE (LIVE AT RED ROCKS)

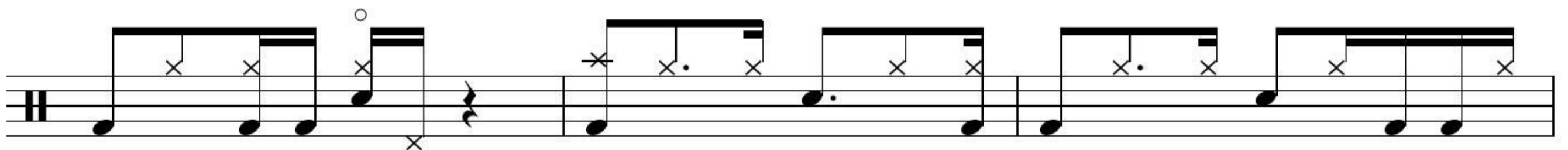
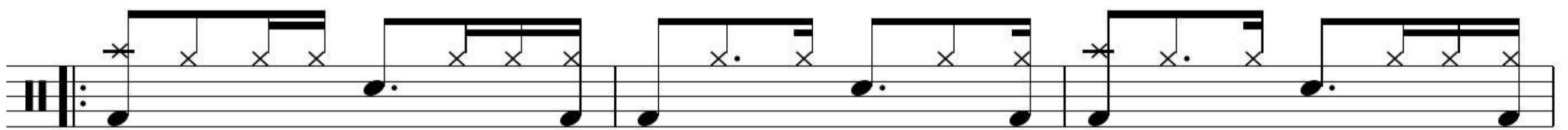
DAVE MATTHEWS BAND

♩ = 126 **INTRO** Gtr. Perc Improv.

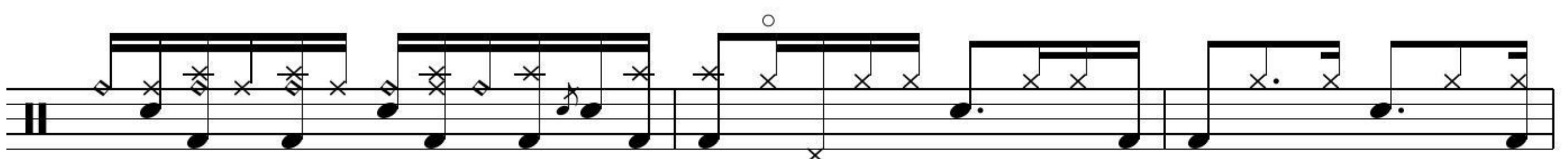
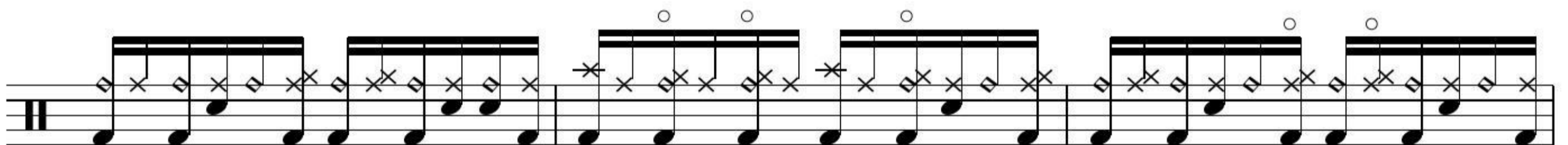
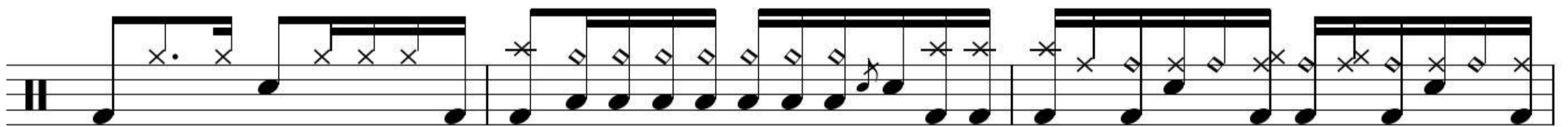
4X



VERSE



CHORUS



2 SATTELITE

Musical notation for the first system, featuring a first and second ending bracket. The notation includes a treble clef, a key signature of one flat, and a 6/8 time signature. The first ending is marked with '1.' and the second ending with '2.'. The piece concludes with a double bar line and a coda symbol.

BRIDGE

Musical notation for the first line of the bridge section, starting with a treble clef, a key signature of one flat, and a 6/8 time signature. The notation includes various guitar techniques such as bends and slurs.

Musical notation for the second line of the bridge section, continuing the melodic and harmonic development.

Musical notation for the third line of the bridge section, featuring a double bar line and a coda symbol at the end.

Musical notation for the fourth line of the bridge section, continuing the melodic and harmonic development.



CHORUS

Musical notation for the first line of the chorus section, starting with a treble clef, a key signature of one flat, and a 6/8 time signature. The notation includes a 'D.S. al Coda' instruction and a coda symbol.

D.S. al Coda

Musical notation for the second line of the chorus section, continuing the melodic and harmonic development.

Musical notation for the third line of the chorus section, concluding the piece with a double bar line and a coda symbol.

Musical notation for the first system, consisting of two staves. The top staff contains a sequence of chords with 'x' marks indicating fretted notes. The bottom staff contains a melodic line with triplets and a final note marked with a circled 'x'.

BRIDGE

Musical notation for the bridge section, consisting of two staves. The top staff is in 6/8 time and features a complex chordal texture with many 'x' marks. The bottom staff continues the melodic line with various rhythmic patterns.

OUTRO

Musical notation for the outro section, consisting of two staves. The top staff shows a sequence of chords with 'x' marks. The bottom staff features a melodic line with triplets and ends with a circled 'x' and the word 'Fine'.

An empty musical staff with a double bar line at the beginning and end.

An empty musical staff with a double bar line at the beginning and end.