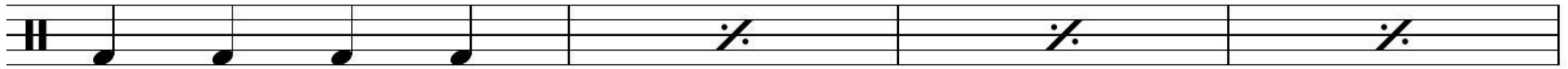
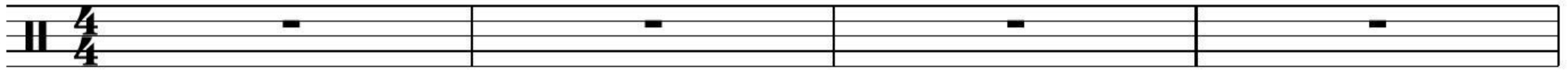


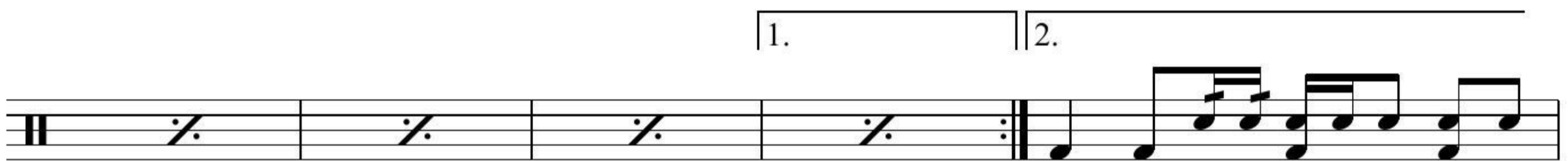
MOVES LIKE JAGGER

MAROON 5

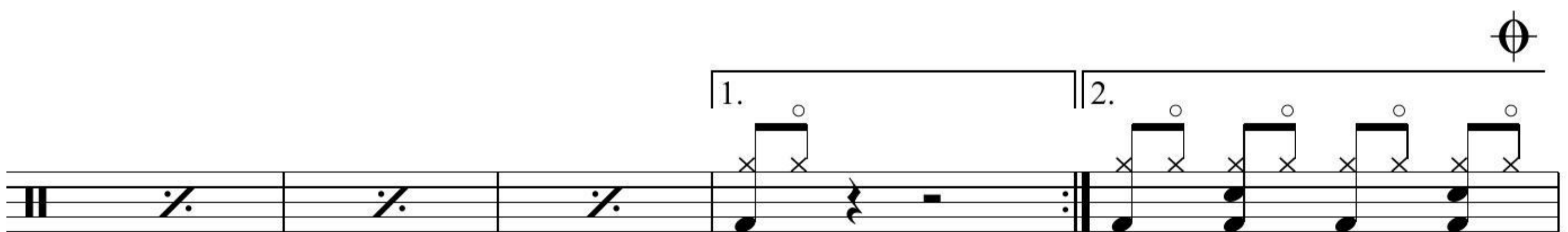
♩ = 128 INTRO



VERSE



CHORUS



VERSE



2 MOVES LIKE JAGGER

Musical notation for the first section of the piece. It consists of a single staff with a treble clef and a double bar line. The notation is a continuous eighth-note pattern. A bracket above the first two measures is labeled '2.'. A bracket above the last two measures is labeled '6' and '3'. The piece concludes with the instruction 'D.S. al Coda'.

BRIDGE

Musical notation for the BRIDGE section, consisting of five staves. The first staff begins with a treble clef and a double bar line, followed by four eighth notes and three measures of rests, each marked with a slash and a colon. The second staff continues with three measures of rests and a quarter note followed by a triplet of eighth notes. The third staff features four eighth notes with accents and 'x' marks, followed by three measures of rests. The fourth and fifth staves each consist of four measures of rests.

CHORUS

Musical notation for the CHORUS section, consisting of two staves. The first staff begins with a treble clef and a double bar line, followed by four eighth notes with accents and 'x' marks, and the instruction 'N.C.'. This is followed by three measures of rests. The second staff consists of four measures of rests.

OUTRO Gtr.

Musical notation for the OUTRO section, consisting of a single staff with a treble clef and a double bar line. It contains two measures of rests.