

LOVE IS STRONGER THAN JUSTICE

STING

♩ = 166 INTRO

Gtr. / /

VERSE

2 LOVE IS STRONGER

CHORUS

BRIDGE

D.S. al Coda

VERSE

Musical notation for the first section of the song. It consists of two staves. The top staff is a guitar accompaniment with a capo on the first fret, indicated by a 'C' on a line. The bottom staff is a melody line. The first measure has a circled note on the first line of the staff.

CHORUS

Musical notation for the chorus. It consists of two staves. The top staff is a guitar accompaniment with a capo on the first fret. The bottom staff is a melody line. The first measure has a circled note. The second measure is the start of a triplet, indicated by a bracket with the number '3' above it. This triplet continues through the fourth measure. The fifth measure is another triplet, and the sixth measure is a final triplet. The section ends with a double bar line and a repeat sign.

Musical notation for the 'Play 15 More' section. It consists of two staves. The top staff is a guitar accompaniment with a capo on the first fret. The bottom staff is a melody line. The first measure is labeled 'Play 15 More'. The second measure is the start of a triplet, indicated by a bracket with the number '3' above it. This triplet continues through the fourth measure. The fifth measure is another triplet, and the sixth measure is a final triplet. The section ends with a circled note on the first line of the staff.

BRIDGE

Musical notation for the bridge. It consists of two staves. The top staff is a guitar accompaniment with a capo on the first fret. The bottom staff is a melody line. The first measure has a circled note on the first line of the staff.

Musical notation for the second section of the bridge. It consists of two staves. The top staff is a guitar accompaniment with a capo on the first fret. The bottom staff is a melody line. The first measure has a circled note on the first line of the staff.

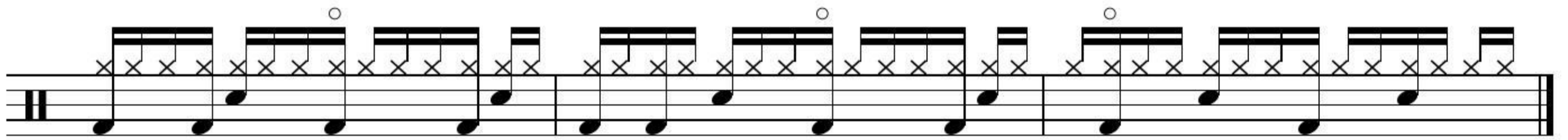
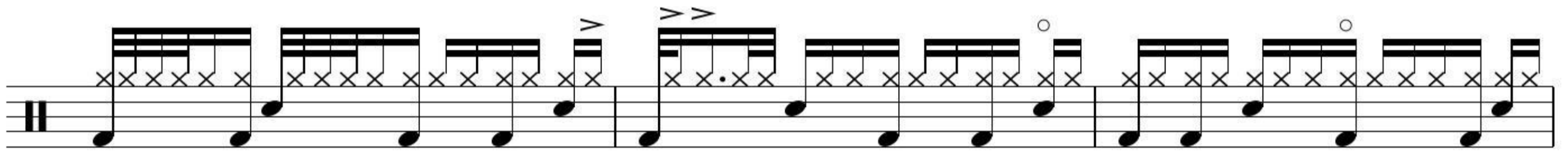
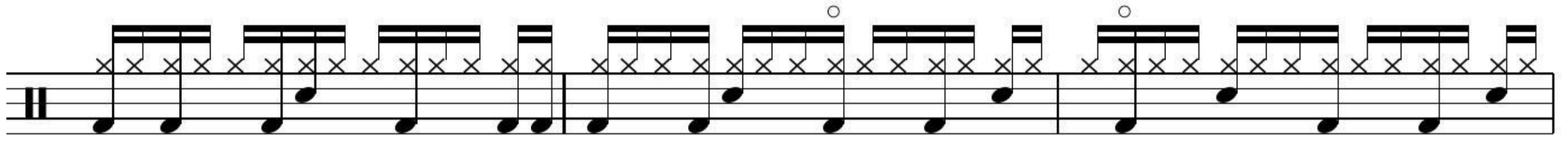
OUTRO

Musical notation for the first section of the outro. It consists of two staves. The top staff is a guitar accompaniment with a capo on the first fret. The bottom staff is a melody line. The first measure has a circled note on the first line of the staff.

Musical notation for the second section of the outro. It consists of two staves. The top staff is a guitar accompaniment with a capo on the first fret. The bottom staff is a melody line. The first measure has a circled note on the first line of the staff.

Musical notation for the final section of the outro. It consists of two staves. The top staff is a guitar accompaniment with a capo on the first fret. The bottom staff is a melody line. The first measure has a circled note on the first line of the staff.

4 LOVE IS STRONGER



Repeat to fade