

LET'S GET IT ON

MARVIN GAYE

♩ = 85 INTRO

The Intro section consists of two staves of music in 4/4 time. The first staff begins with a treble clef, a key signature of one flat (Bb), and a 4/4 time signature. It features a series of eighth notes with 'x' marks above them, indicating a specific guitar technique. The second staff continues the melody with similar eighth notes and includes two repeat signs (double dots with a slash) in the middle.

CHORUS

The Chorus section consists of two staves of music in 4/4 time. The first staff continues the eighth-note pattern with 'x' marks. The second staff features a more complex rhythmic pattern with some notes marked with a circled 'o' above them, and includes a repeat sign at the end.

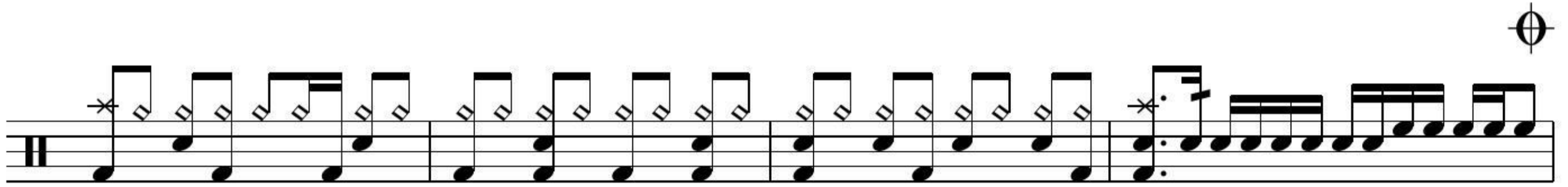
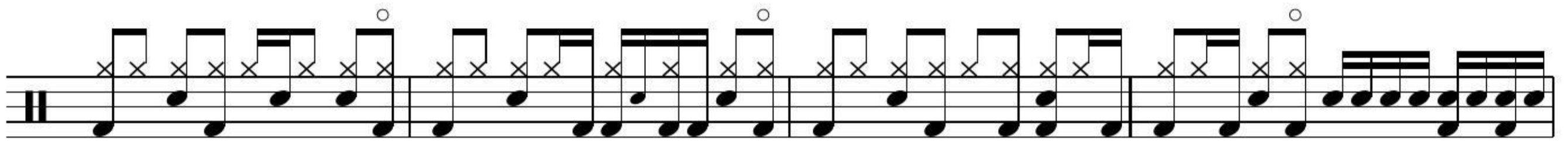
VERSE

The Verse section consists of two staves of music in 4/4 time. The first staff begins with a repeat sign and includes the text 'N.C.' (No Chords) above the notes. The second staff features a double bar line with a '2' above it, indicating a second ending, followed by two first and second ending brackets labeled '1.' and '2.'.

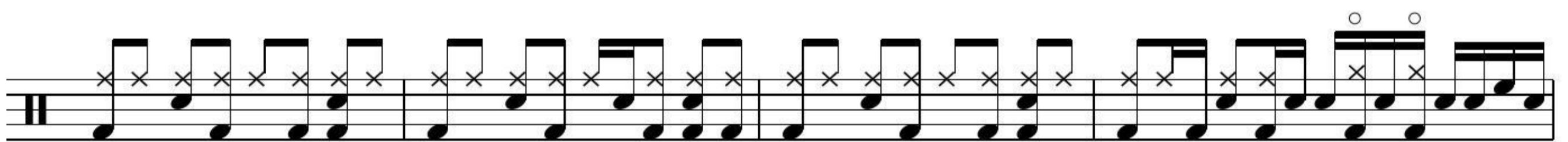
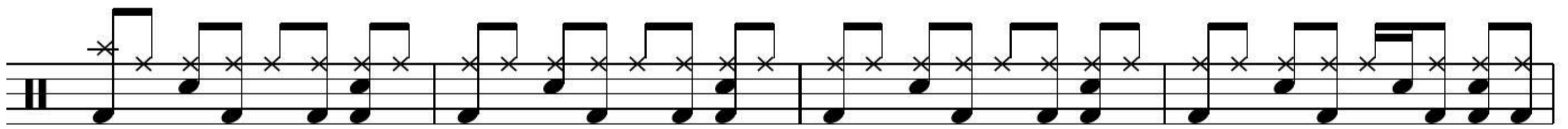
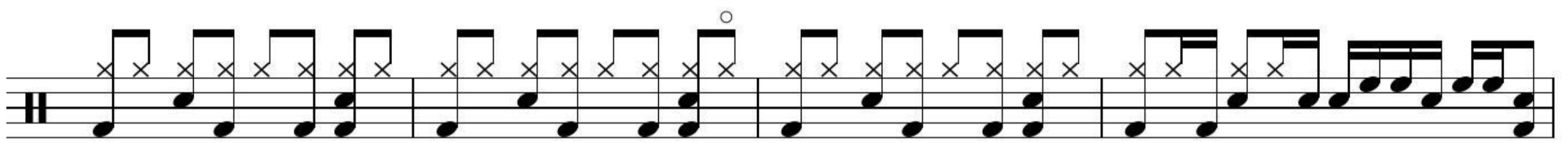
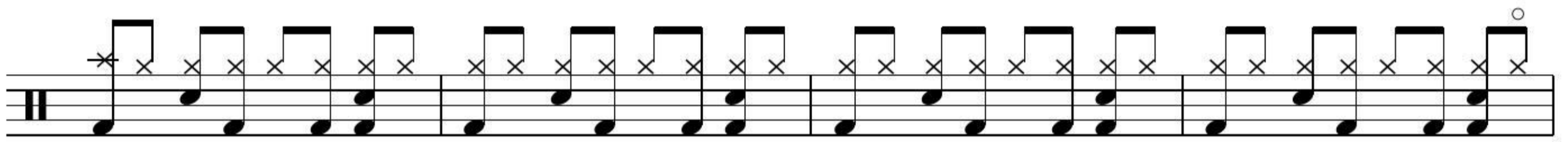
BRIDGE

The Bridge section consists of two staves of music in 4/4 time. The first staff continues the eighth-note pattern with 'x' marks. The second staff features a more complex rhythmic pattern with some notes marked with a circled 'o' above them.

2 LET'S GET IT ON

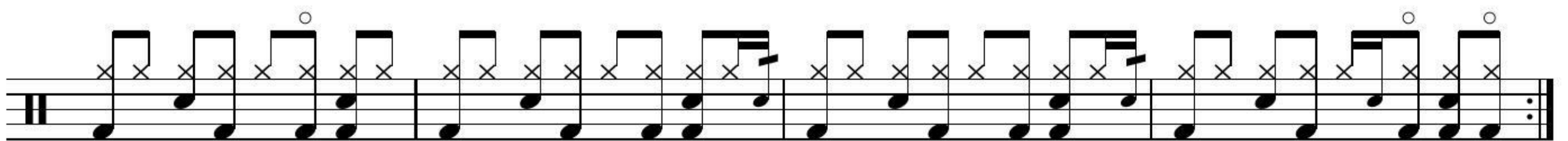
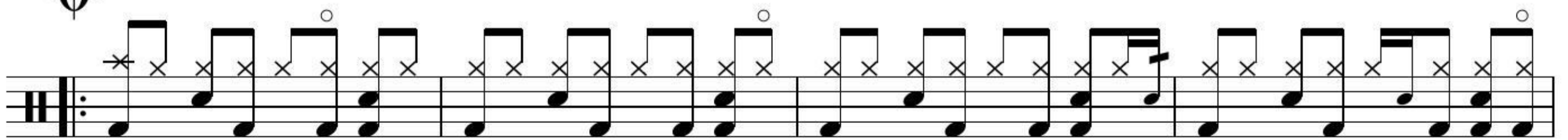


CHORUS



D.S. al Coda

OUTRO



Repeat to fade