

LADY MARMALADE

LABELLE

♩ = 118 INTRO

Two staves of guitar music in 4/4 time. The first staff contains 16 measures of eighth-note chords with 'x' marks above them. The second staff contains 16 measures of eighth-note chords, with some notes marked with an 'o' and a star.

VERSE

One staff of guitar music in 4/4 time. It contains 16 measures of eighth-note chords with 'x' marks above them.

PRE CHORUS

Two staves of guitar music in 4/4 time. The first staff contains 16 measures of eighth-note chords with 'x' marks above them. The second staff contains 16 measures of eighth-note chords, with some notes marked with an 'o' and a star.

CHORUS

One staff of guitar music in 4/4 time. It contains 16 measures of eighth-note chords with 'x' marks above them.

D.S. al Fine

BRIDGE

One staff of guitar music in 4/4 time. It contains 16 measures of eighth-note chords with 'x' marks above them, ending with a double bar line and a repeat sign.

3X

2 LADY MARMALADE

VERSE

The first line of the Verse section consists of two measures of music. The first measure contains a sequence of eighth notes with 'x' marks above them, followed by a quarter note with an 'o' above it. The second measure contains a sequence of eighth notes with 'x' marks, followed by a quarter note with an 'o' above it, and a quarter rest.

The second line of the Verse section consists of two measures of music. The first measure contains a sequence of eighth notes with 'x' marks, followed by a quarter note with an 'o' above it. The second measure contains a sequence of eighth notes with 'x' marks, followed by a quarter note with an 'o' above it, and a quarter rest.

The first and second endings of the Verse section are shown in two measures. The first measure is marked '1.' and contains a sequence of eighth notes with 'x' marks. The second measure is marked '2.' and contains a sequence of eighth notes with 'x' marks, followed by a quarter note with an 'o' above it, and a quarter rest.

PRE CHORUS

The first line of the Pre Chorus section consists of two measures of music. The first measure contains a sequence of eighth notes with 'x' marks, followed by a quarter note with an 'o' above it. The second measure contains a sequence of eighth notes with 'x' marks, followed by a quarter note with an 'o' above it, and a quarter rest.

The second line of the Pre Chorus section consists of two measures of music. The first measure contains a sequence of eighth notes with 'x' marks, followed by a quarter note with an 'o' above it. The second measure contains a sequence of eighth notes with 'x' marks, followed by a quarter note with an 'o' above it, and a quarter rest.

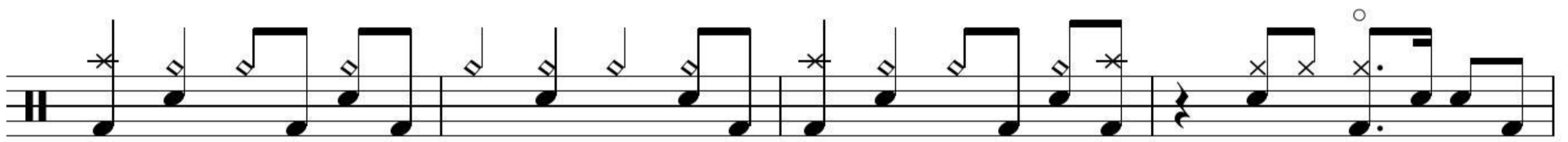
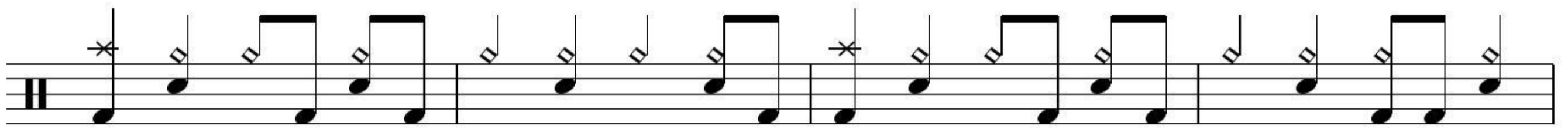
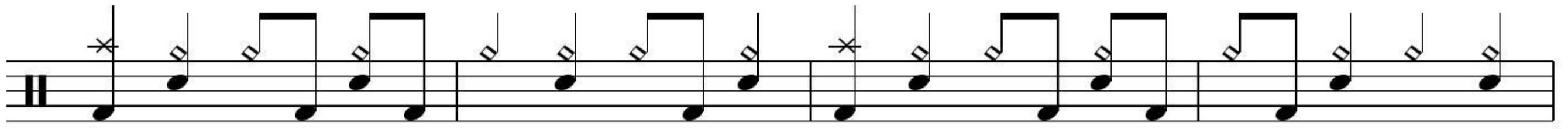
CHORUS

The first line of the Chorus section consists of two measures of music. The first measure contains a sequence of eighth notes with 'x' marks, followed by a quarter note with an 'o' above it. The second measure contains a sequence of eighth notes with 'x' marks, followed by a quarter note with an 'o' above it, and a quarter rest.

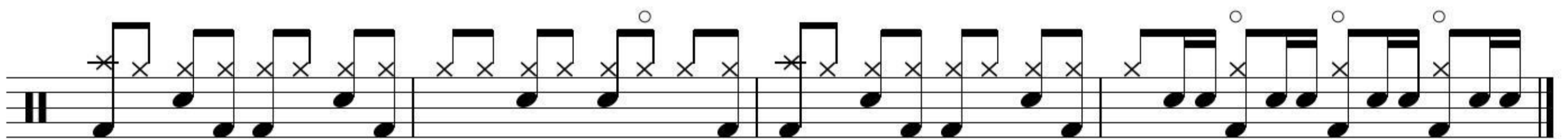
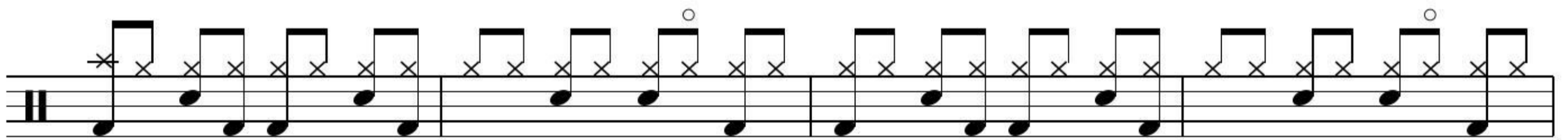
The second line of the Chorus section consists of two measures of music. The first measure contains a sequence of eighth notes with 'x' marks, followed by a quarter note with an 'o' above it. The second measure contains a sequence of eighth notes with 'x' marks, followed by a quarter note with an 'o' above it, and a quarter rest.

BREAK

The Break section consists of two measures of music. The first measure contains a sequence of eighth notes with 'x' marks, followed by a quarter note with an 'o' above it. The second measure contains a sequence of eighth notes with 'x' marks, followed by a quarter note with an 'o' above it, and a quarter rest.



OUTRO



Play to fade