

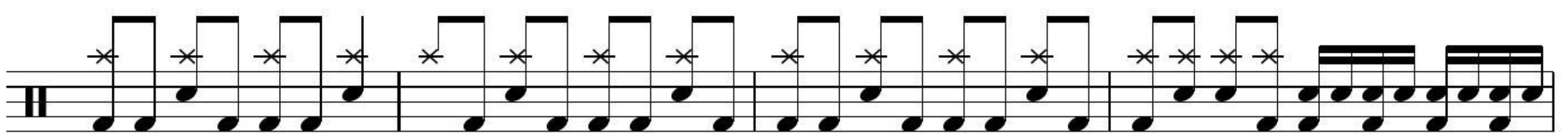
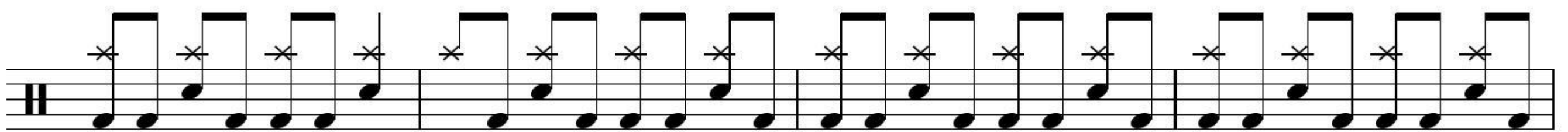
# KNOW YOUR ENEMY

GREEN DAY

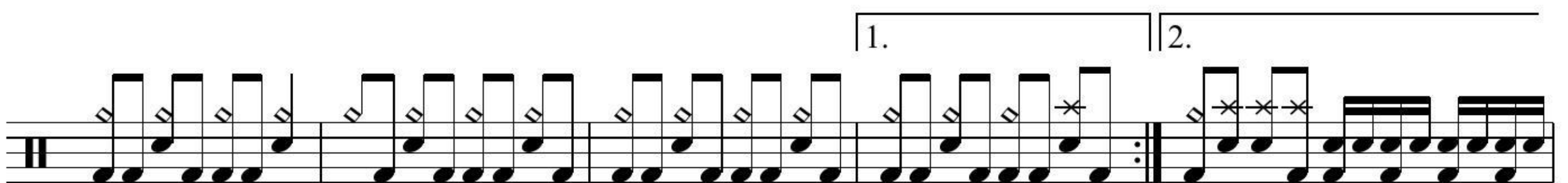
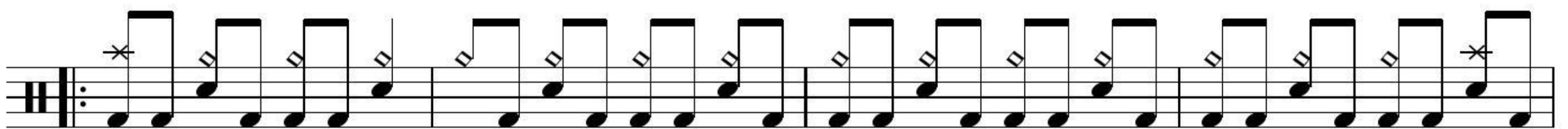
♩ = 130 INTRO



## CHORUS



## VERSE



## CHORUS



BRIDGE

The Bridge section consists of two staves of music. The first staff contains a sequence of eighth notes with various fretting techniques indicated by asterisks and diamond symbols. The second staff continues this sequence, ending with a series of sixteenth notes.

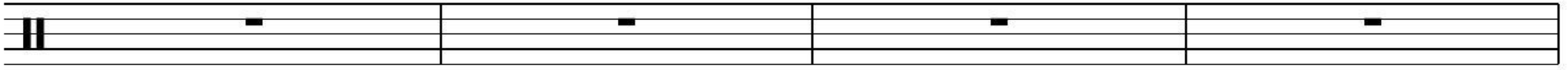
GUITAR SOLO

The Guitar Solo section consists of six staves of music. It features a variety of rhythmic patterns, including eighth and sixteenth notes, and includes several instances of fretting techniques marked with asterisks and diamond symbols. The section concludes with a double bar line and repeat dots.

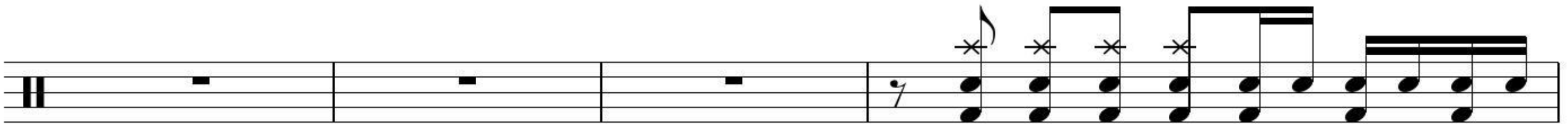
VERSE

The Verse section consists of two staves of music. The first staff shows a rhythmic pattern of eighth notes with fretting techniques. The second staff continues the pattern and ends with a series of chords.

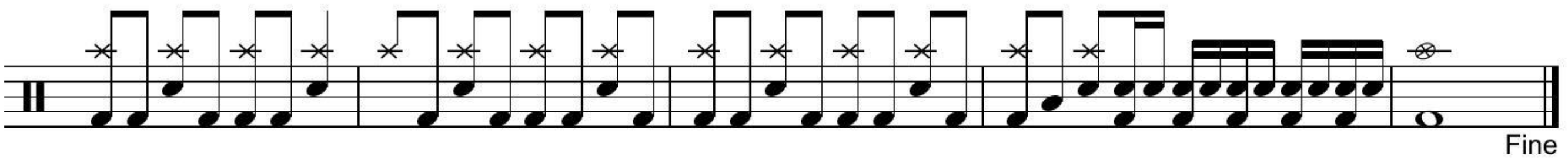
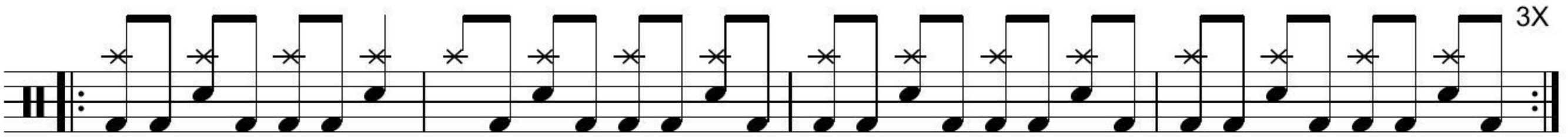
BREAK



CHORUS



OUTRO



Fine