

JUST GOT TO BE

THE BLACK KEYS

♩ = 86

CHORUS

Musical notation for the Chorus section, consisting of two staves of music in 4/4 time. The first staff begins with a double bar line and repeat sign. The music features a mix of eighth and sixteenth notes, with some notes marked with an 'x' above them. The second staff continues the melodic line with similar rhythmic patterns and 'x' markings.

VERSE

Musical notation for the Verse section, consisting of one staff of music in 4/4 time. The music features a mix of eighth and sixteenth notes, with many notes marked with an 'x' above them.

Musical notation for a double bar line section, consisting of one staff with two measures. Each measure contains a double bar line with a '2' above it and a repeat sign below it.

Musical notation for a double bar line section, consisting of one staff with three measures. The first two measures contain eighth notes marked with 'x', and the third measure contains a double bar line with a repeat sign.

CHORUS

Musical notation for the Chorus section, consisting of one staff of music in 4/4 time. The music features a mix of eighth and sixteenth notes, with some notes marked with an 'x' above them.

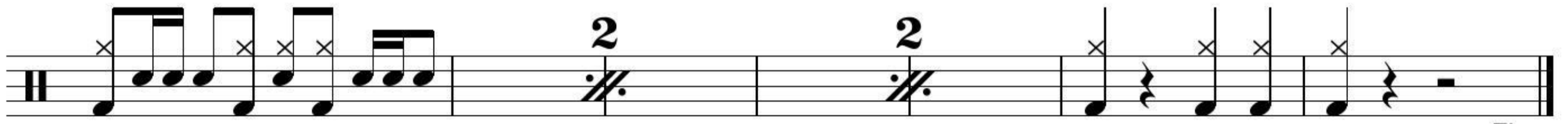
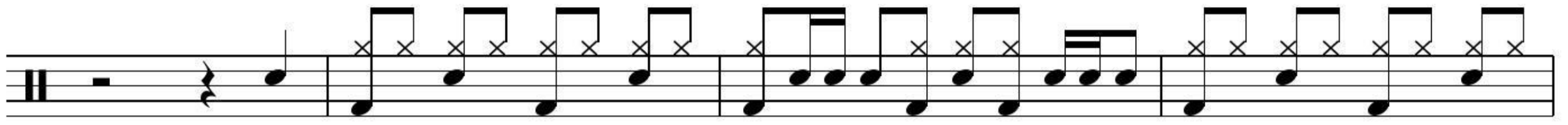
Musical notation for the Chorus section, consisting of one staff of music in 4/4 time. The music features a mix of eighth and sixteenth notes, with some notes marked with an 'x' above them.

BRIDGE

Musical notation for the Bridge section, consisting of one staff of music in 4/4 time. The music features eighth notes marked with 'x', followed by three measures of a double bar line with a repeat sign.

2 JUST GOT TO BE

OUTRO



Fine