

HOTEL CALIFORNIA

EAGLES

♩ = 74 INTRO

Rest 8 Bars

VERSE

CHORUS

D.S. al Coda

2 HOTEL CALIFORNIA

BRIDGE

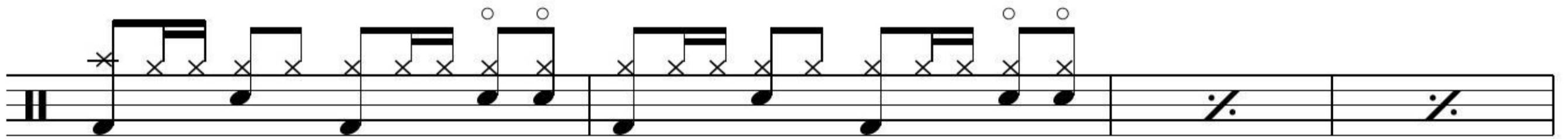
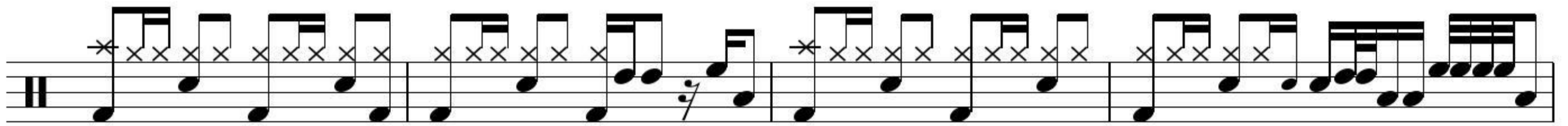
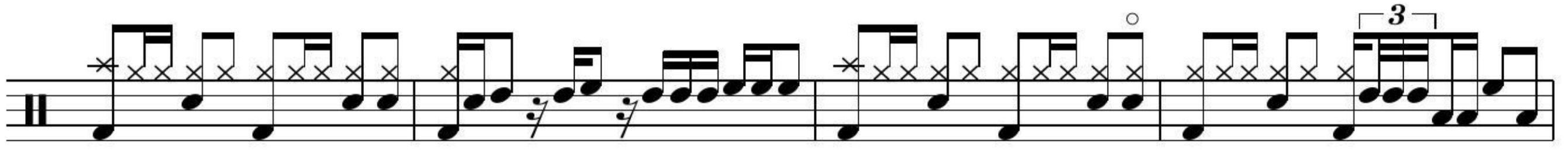
The Bridge section consists of two staves of music. The first staff begins with a circled cross symbol (Ø) above the first measure. It contains a series of chords with 'x' marks above them, indicating barre positions. The second staff continues this sequence, featuring a double bar line with a '2' above it, followed by a series of eighth and sixteenth notes.

VERSE

The Verse section consists of two staves of music. The first staff begins with a circled cross symbol (Ø) above the first measure and contains a series of chords with 'x' marks above them. The second staff continues this sequence, featuring a double bar line with a slash and a vertical line through it (⌋) above it, followed by a series of eighth and sixteenth notes.

GUITAR SOLO

The Guitar Solo section consists of three staves of music. The first staff begins with a circled cross symbol (Ø) above the first measure and contains a series of chords with 'x' marks above them. The second staff continues this sequence, featuring a double bar line with a slash and a vertical line through it (⌋) above it, followed by a series of eighth and sixteenth notes. The third staff continues the solo with a double bar line with a slash and a vertical line through it (⌋) above it, followed by a series of eighth and sixteenth notes.



Fade out