

FATLIP

SUM 41

♩ = 98 INTRO Gtr.

The Intro section consists of two staves of music. The first staff is in 4/4 time and contains four measures of whole rests, followed by a half note chord. The second staff contains a sequence of eighth notes with asterisks above them, indicating guitar techniques. It includes two measures with a slash through the staff, indicating a double bar line.

VERSE

The Verse section is a single staff of music featuring a sequence of eighth notes. Circles above certain notes indicate specific guitar techniques. The staff begins with a double bar line and a repeat sign.

PRE CHORUS

The Pre Chorus section is a single staff of music consisting of a continuous eighth-note pattern with asterisks above the notes, indicating guitar techniques.

CHORUS

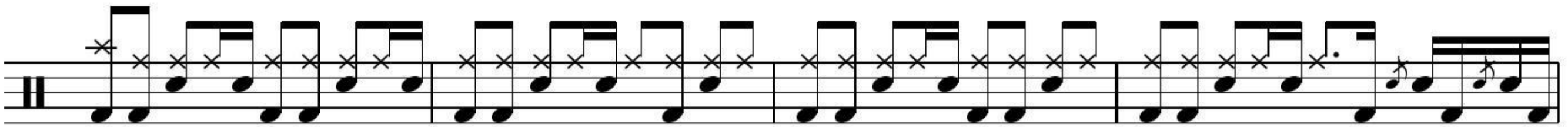
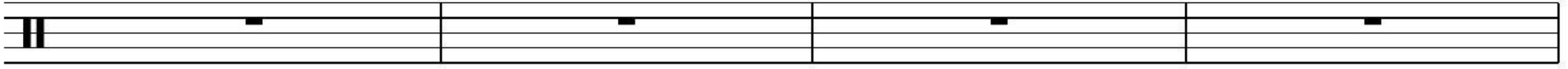
The Chorus section is a single staff of music featuring eighth notes and a circle above a note, indicating a guitar technique. It includes a double bar line and a repeat sign.

This block shows the first ending of the chorus, marked with a '1.' and a repeat sign. It consists of a single staff of music with eighth notes and asterisks above them.

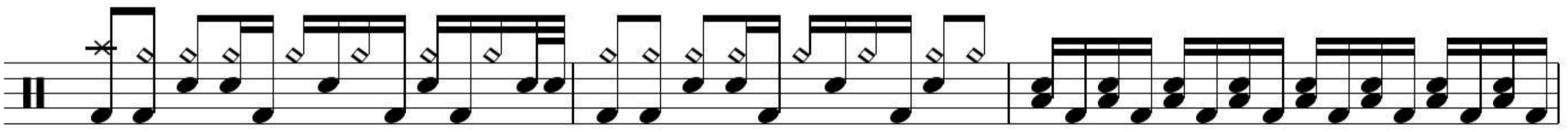
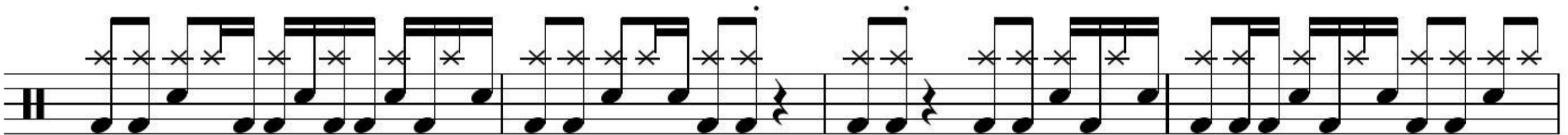
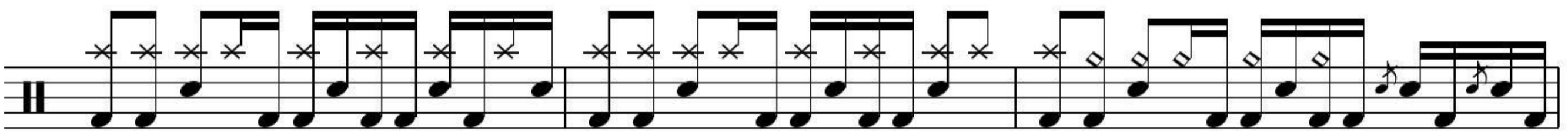
This block shows the second ending of the chorus, marked with a '2.' and a repeat sign. It consists of a single staff of music with eighth notes and asterisks above them.

This block shows the final ending of the chorus, marked with a '2.' and a repeat sign. It consists of a single staff of music with eighth notes and asterisks above them.

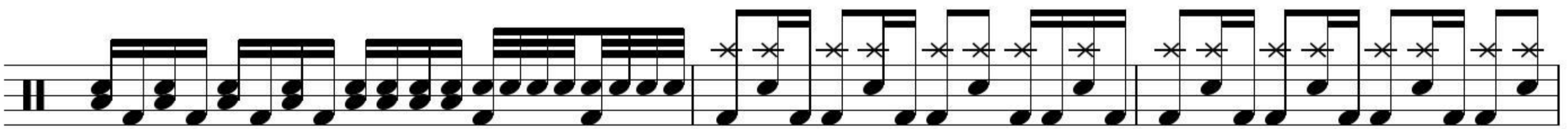
BREAK



BRIDGE



CHORUS



OUTRO

