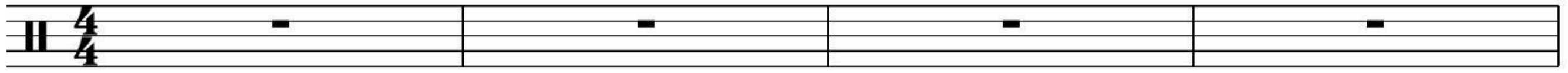


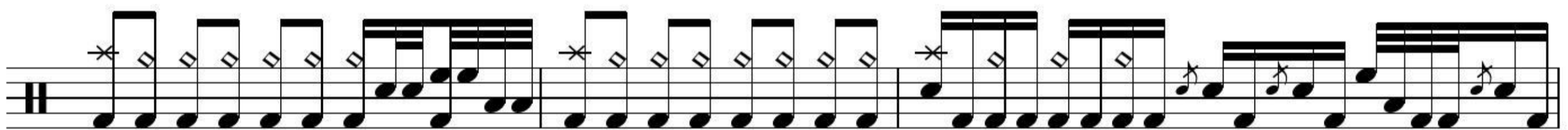
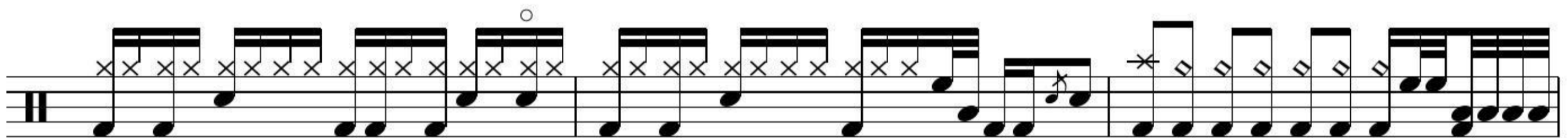
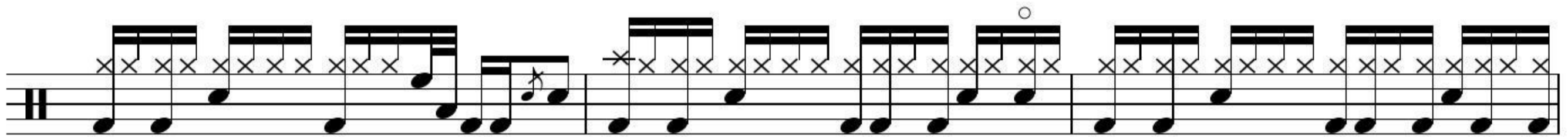
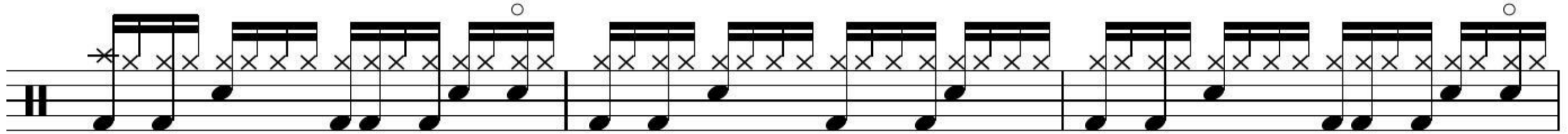
DECODE

PARAMORE

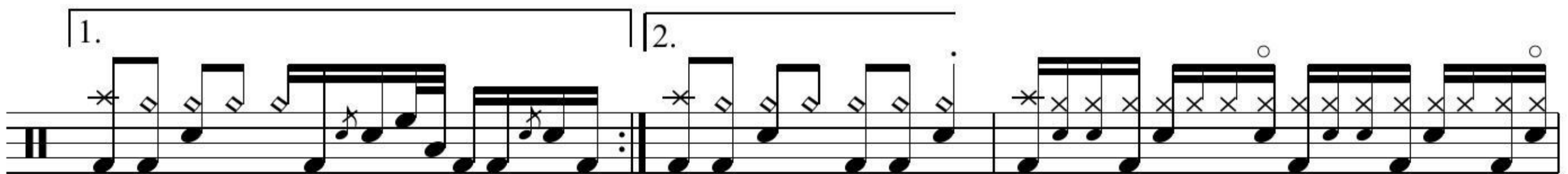
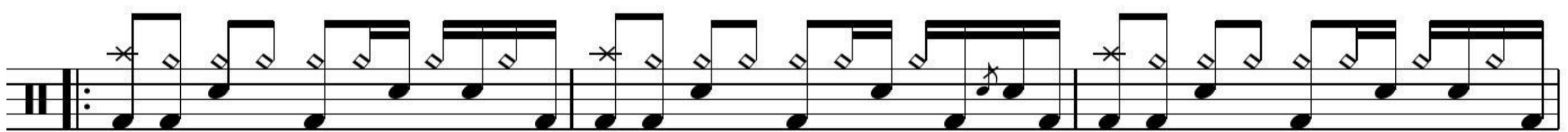
♩ = 83 INTRO Gtr.




VERSE



CHORUS

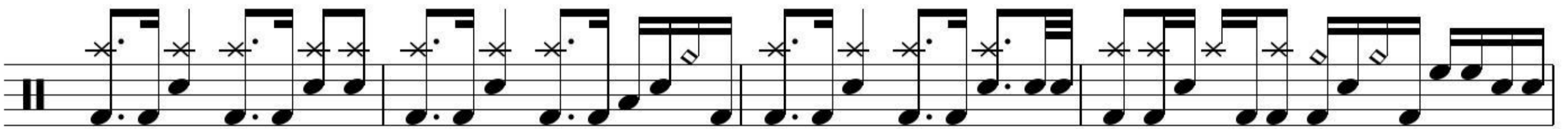
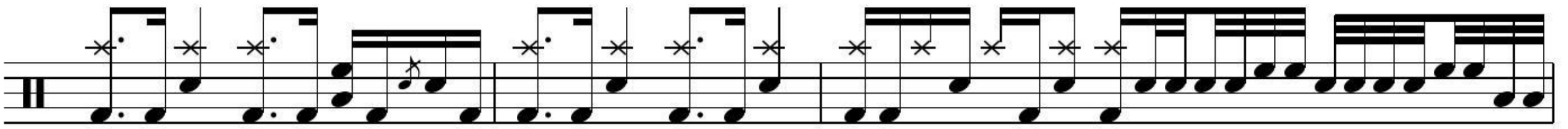


BRIDGE

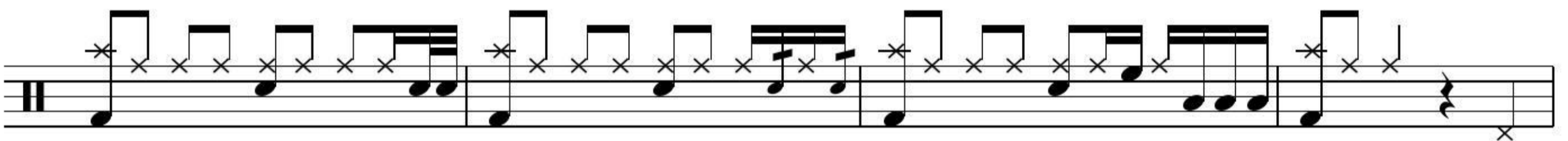
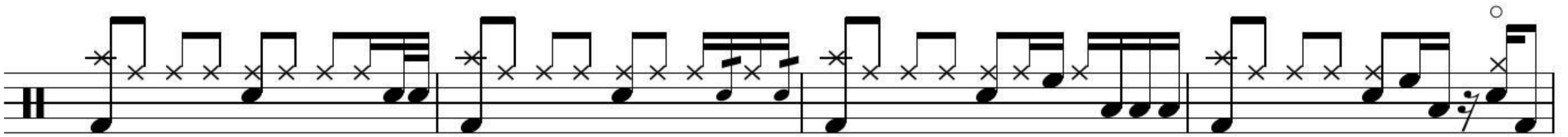


D.S. al Coda

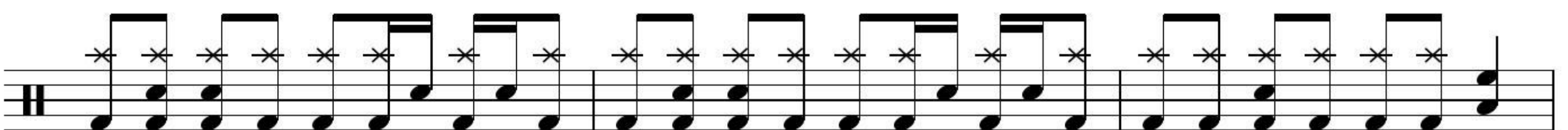
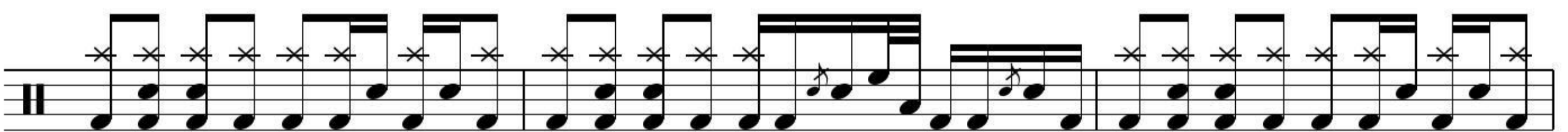
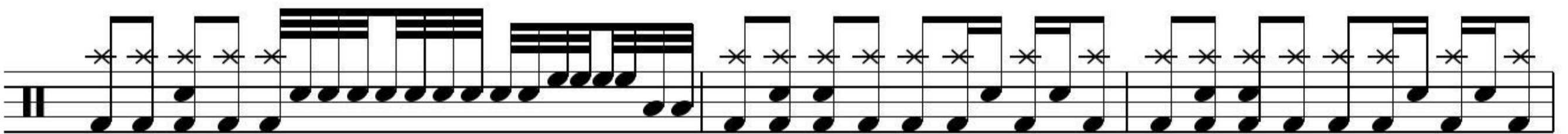
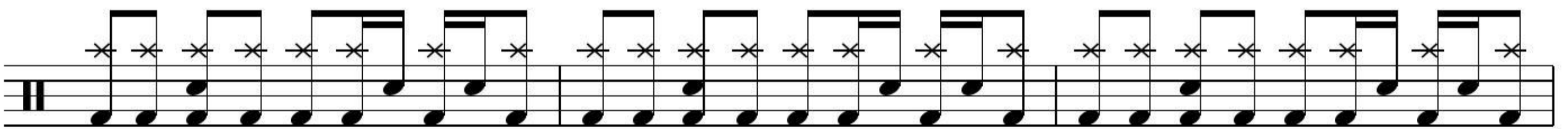
2 DECODE



BREAKDOWN



CHORUS



OUTRO

The first staff of music contains 12 measures. It begins with a treble clef and a key signature of one sharp (F#). The melody consists of quarter and eighth notes, with some notes marked with an asterisk. A sixteenth-note triplet appears in the fifth measure.

The second staff of music contains 12 measures. It continues the melody from the first staff, featuring similar rhythmic patterns and asterisk markings.

The third and final staff of music contains 12 measures. It concludes the piece with a sixteenth-note triplet in the fifth measure, a fermata over the eighth measure, and ends with a final note. The word "Fine" is written at the end of the staff.

Fine