

CRUSHCRUSHCRUSH

PARAMORE

♩ = 137

VERSE

Musical notation for the Verse section, consisting of two staves. The first staff starts with a 4/4 time signature and a double bar line. The music features a sequence of eighth notes with chords, some marked with 'x' for power chords. The second staff continues the sequence with similar notation and includes a repeat sign.

PRE CHORUS

Musical notation for the Pre Chorus section, consisting of three staves. The notation continues with eighth notes and chords, including power chords marked with 'x'. The third staff ends with a double bar line.

CHORUS

Musical notation for the Chorus section, consisting of three staves. The first staff begins with a double bar line and a power chord marked with 'x'. The music features a mix of eighth and quarter notes with chords. The third staff includes a double bar line and a repeat sign.

2 CRUSHCRUSHCRUSH

VERSE

Musical notation for the Verse section, consisting of two staves. The first staff contains six measures of music with various fretting symbols (circles and crosses) above the notes. The second staff contains four measures, including repeat signs at the beginning and end.

PRE CHORUS

Musical notation for the Pre Chorus section, consisting of four staves. The first staff has two measures with repeat signs. The second and third staves contain four measures each. The fourth staff contains four measures, including a double bar line and a repeat sign.

CHORUS

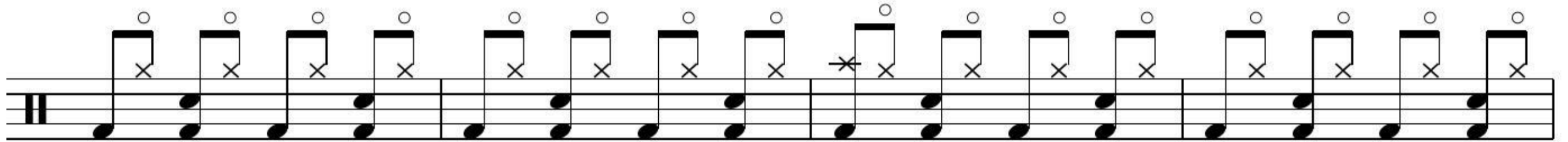
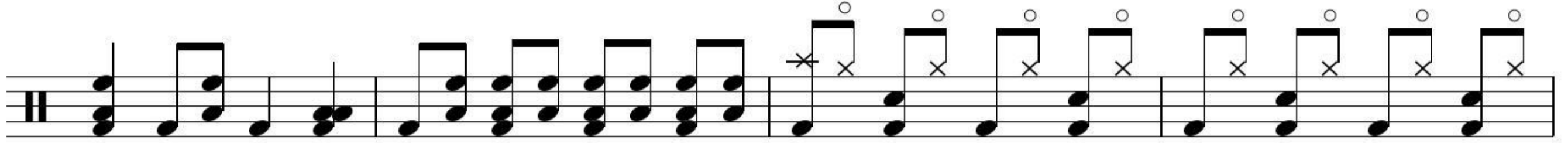
Musical notation for the Chorus section, consisting of two staves. The first staff contains four measures with various fretting symbols. The second staff contains four measures with various fretting symbols.

BREAK

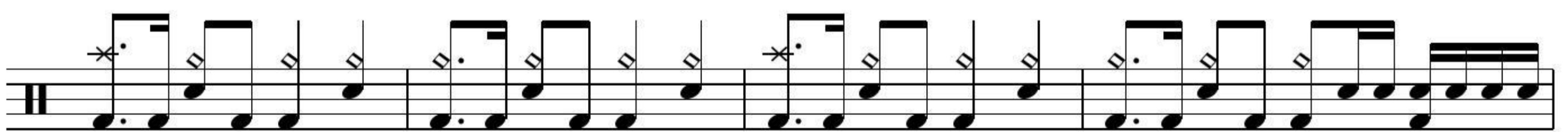
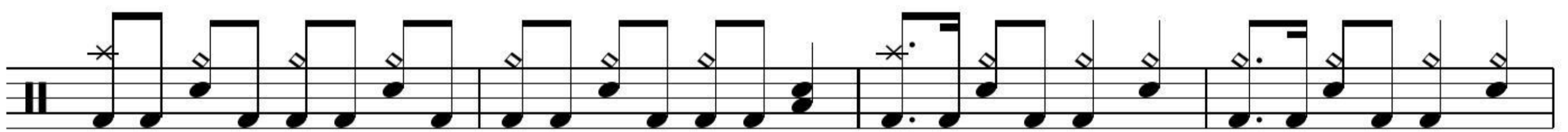
Musical notation for the Break section, consisting of one staff with eight measures of music, each measure starting with a cross symbol above the first note.



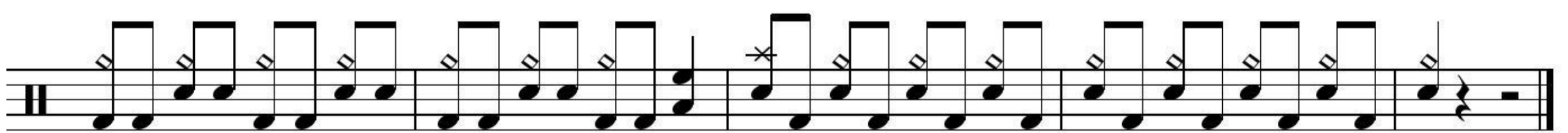
BRIDGE



CHORUS



OUTRO



Fine