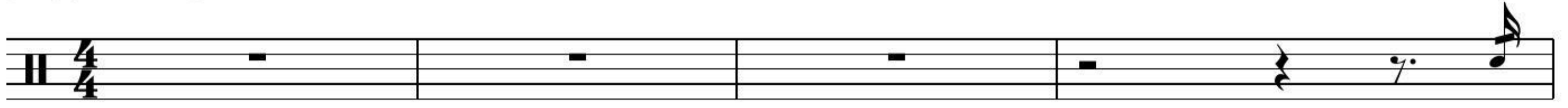


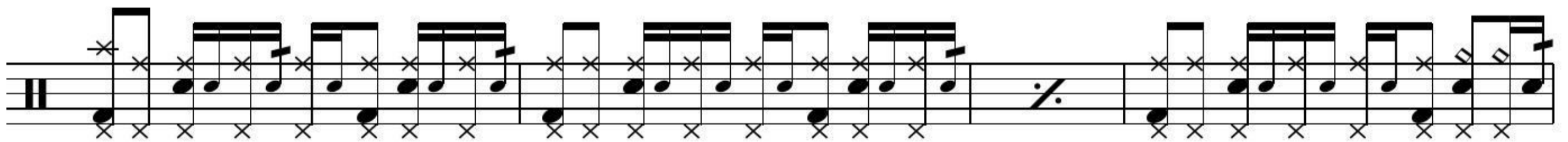
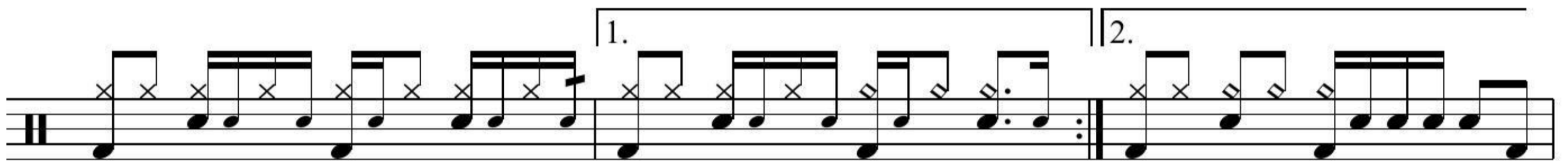
CALIFORNICATION

RED HOT CHILI PEPPERS

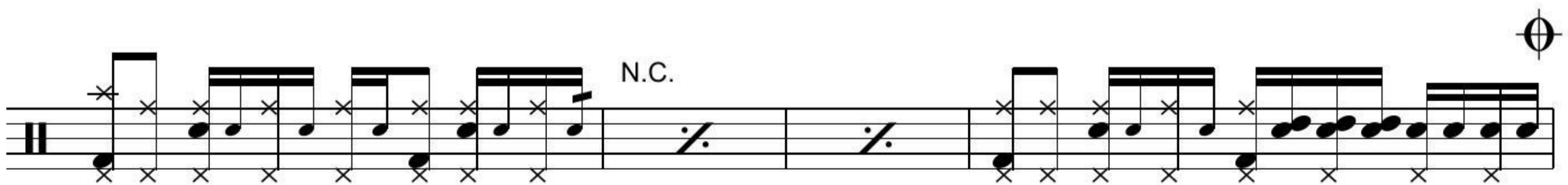
♩ = 97 INTRO



VERSE



PRE CHORUS



CHORUS



D.S. al Coda

2 CALIFORNICATION

♩ CHORUS

Two staves of guitar tablature for the Chorus. The first staff contains 16 measures of music, and the second staff contains 12 measures, ending with a final note and a fermata.

GUITAR SOLO

Three staves of guitar tablature for the Guitar Solo. The first staff includes a double bar line, a repeat sign, and the text "N.C." above the staff. The second and third staves continue the solo with various rhythmic patterns.

VERSE

Three staves of guitar tablature for the Verse. The first staff includes a double bar line and a repeat sign. The second and third staves continue the verse with various rhythmic patterns.

PRE CHORUS

Musical notation for the first line of the Pre Chorus. It features a treble clef and a key signature of one flat. The notation includes a series of eighth notes with stems pointing up, each accompanied by an 'x' below it, indicating a fretted note. There are two measures of rests, each marked with a double bar line and a slash. The text "N.C." is written above the second measure of rest. The line ends with a double bar line.

Musical notation for the second line of the Pre Chorus. It continues the pattern of eighth notes with stems pointing up and 'x' below them. The line ends with a double bar line.

OUTRO CHORUS

Musical notation for the first line of the Outro Chorus. It features a treble clef and a key signature of one flat. The notation includes a series of eighth notes with stems pointing up, each accompanied by an 'x' below it. There are two measures of rests, each marked with a double bar line and a slash. The line ends with a double bar line.

Musical notation for the second line of the Outro Chorus. It continues the pattern of eighth notes with stems pointing up and 'x' below them. The line ends with a double bar line.

Fine