

BUBBLES

BIFFY CLYRO

♩ = 147 INTRO Gtr.

Musical notation for the Intro section of the guitar part. It begins with a 4/4 time signature and a key signature of one sharp (F#). The first two measures are whole rests. The third measure starts with a treble clef, a sharp sign, and a series of eighth notes with 'x' marks above them, indicating muted notes. The pattern continues for the rest of the intro.

VERSE

Musical notation for the first line of the Verse section. It continues with the same eighth-note pattern as the intro, with 'x' marks above the notes. A repeat sign is placed at the end of the line.

Musical notation for the second line of the Verse section. It continues with the eighth-note pattern. A '4' with a slash and a repeat sign is placed above the staff, indicating a four-measure rest.

Musical notation for the third line of the Verse section. It continues with the eighth-note pattern. A '4' with a slash and a repeat sign is placed above the staff, indicating a four-measure rest.

Musical notation for the fourth line of the Verse section. It features a first ending (marked '1.') and a second ending (marked '2.'). The first ending leads back to the start of the verse, while the second ending leads to the chorus.

CHORUS

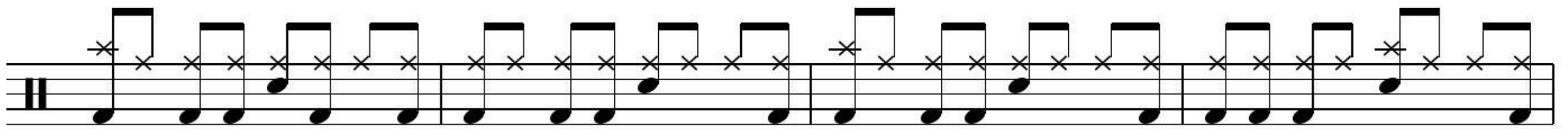
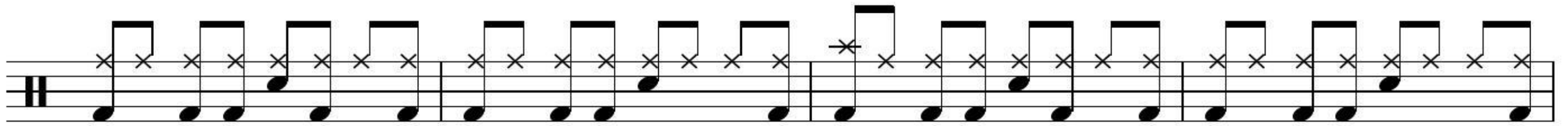
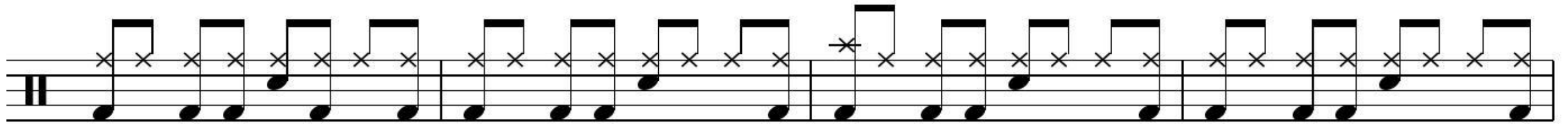
Musical notation for the first line of the Chorus section. It features a series of eighth notes with diamond-shaped flags above them, indicating a specific rhythmic pattern. A repeat sign is placed at the beginning.

Musical notation for the second line of the Chorus section. It continues with the eighth-note pattern. A '2' with a slash and a repeat sign is placed above the staff, indicating a two-measure rest. A first ending (marked '1.') is shown above the staff.

BRIDGE

Musical notation for the first line of the Bridge section. It continues with the eighth-note pattern. A second ending (marked '2.') is shown above the staff.

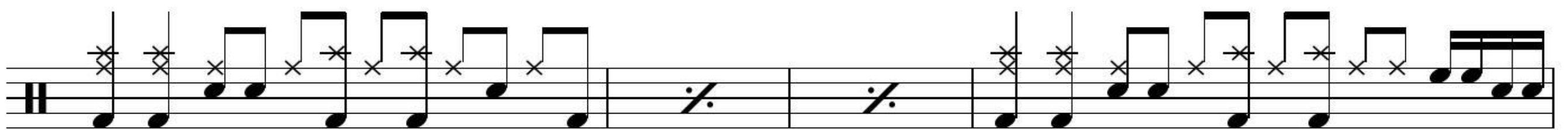
2 BUBBLES



D.S. al Fine (verse no repeat)



OUTRO



Fine