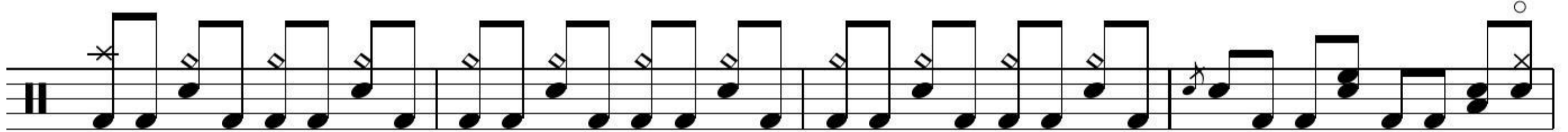


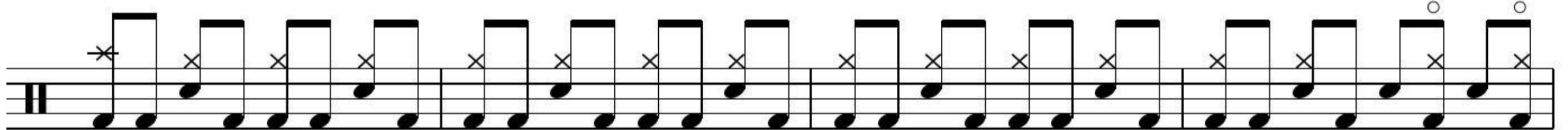
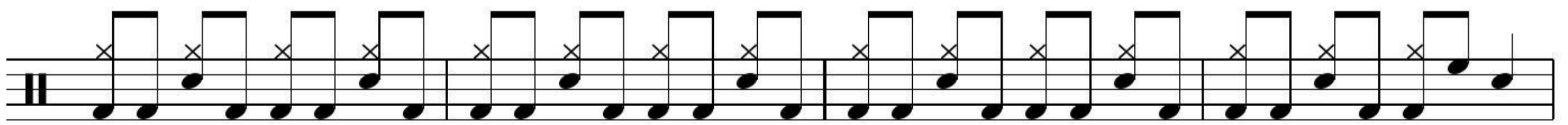
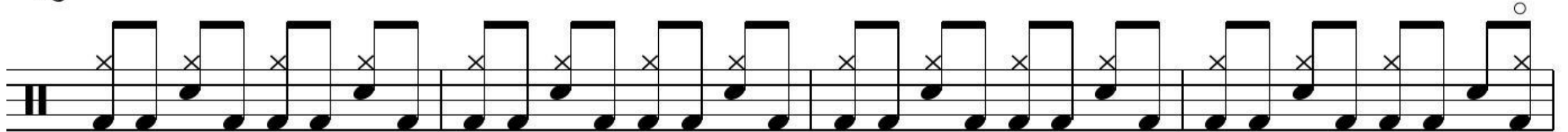
BRICK BY BORING BRICK

PARAMORE

♩ = 164 INTRO



S VERSE



2 BRICK BY BORING BRICK

PRE CHORUS

Musical notation for the Pre Chorus section, featuring a single staff with a treble clef and a key signature of one sharp (F#). The notation includes a double bar line with repeat dots, followed by a first ending bracket labeled "1." and a second ending bracket labeled "2.". The first ending consists of two measures of quarter notes, and the second ending consists of four measures of eighth notes. There are asterisks above the first two notes of the first ending and the last note of the second ending.

CHORUS

Musical notation for the first line of the Chorus, featuring a single staff with a treble clef and a key signature of one sharp (F#). The notation consists of a sequence of eighth notes, with asterisks above the first, third, fifth, and seventh notes of each measure.

Musical notation for the second line of the Chorus, featuring a single staff with a treble clef and a key signature of one sharp (F#). The notation consists of a sequence of eighth notes, with asterisks above the first, third, fifth, and seventh notes of each measure.

Musical notation for the third line of the Chorus, featuring a single staff with a treble clef and a key signature of one sharp (F#). The notation consists of a sequence of eighth notes, with asterisks above the first, third, fifth, and seventh notes of each measure.

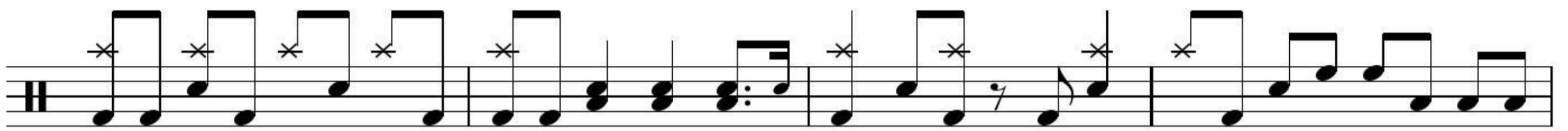
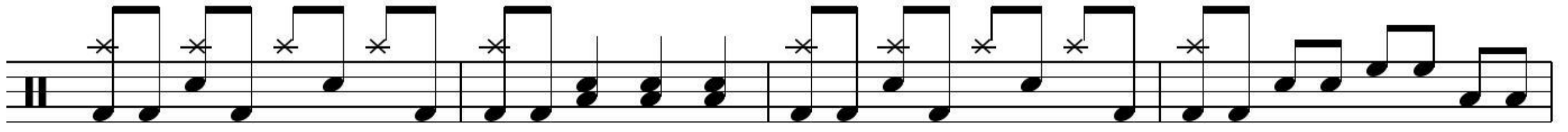
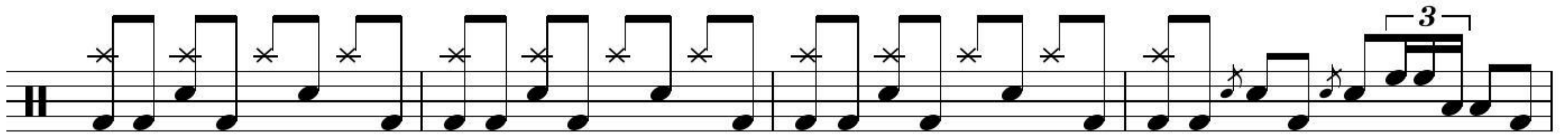
Musical notation for the fourth line of the Chorus, featuring a single staff with a treble clef and a key signature of one sharp (F#). The notation consists of a sequence of eighth notes, with asterisks above the first, third, fifth, and seventh notes of each measure. A Coda symbol (a circle with a cross) is positioned at the end of the line.

Musical notation for the fifth line of the Chorus, featuring a single staff with a treble clef and a key signature of one sharp (F#). The notation consists of a sequence of eighth notes, with asterisks above the first, third, fifth, and seventh notes of each measure. A circled "o" symbol is positioned above the first note of the first measure.

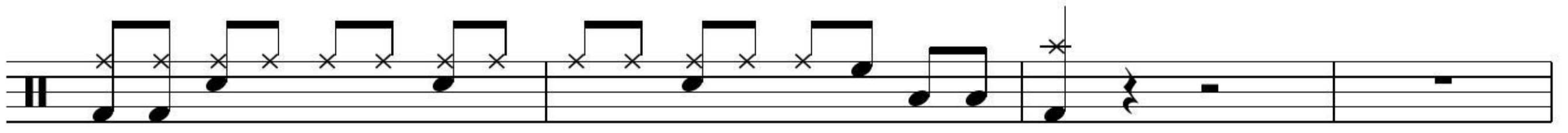
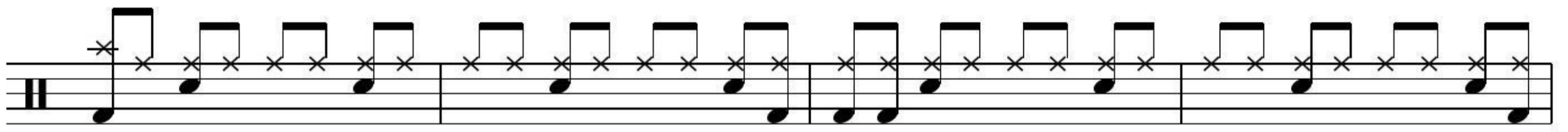
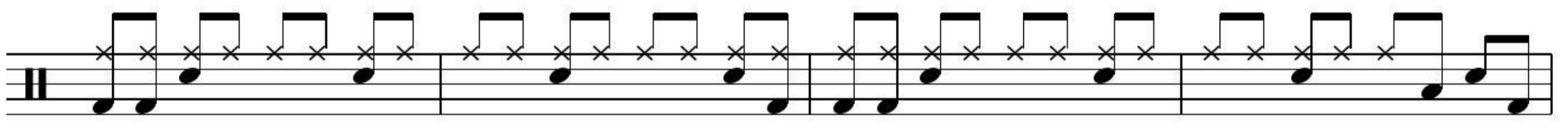
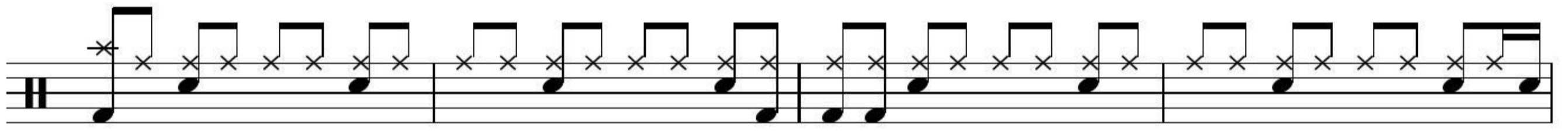
Musical notation for the sixth line of the Chorus, featuring a single staff with a treble clef and a key signature of one sharp (F#). The notation consists of a sequence of eighth notes, with asterisks above the first, third, fifth, and seventh notes of each measure. A circled "o" symbol is positioned above the last note of the last measure.

D.S. al Coda

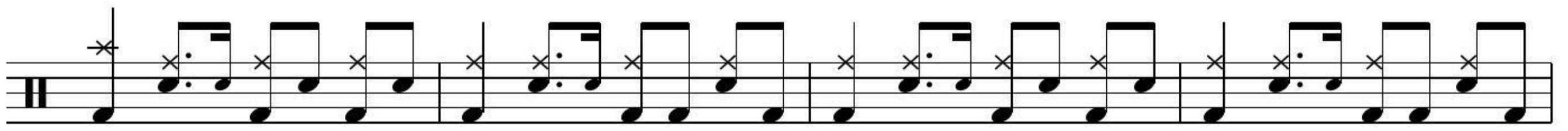
Musical notation for the seventh line of the Chorus, featuring a single staff with a treble clef and a key signature of one sharp (F#). The notation consists of a sequence of eighth notes, with asterisks above the first, third, fifth, and seventh notes of each measure. A Coda symbol (a circle with a cross) is positioned at the beginning of the line.



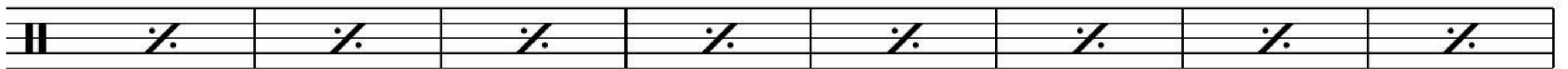
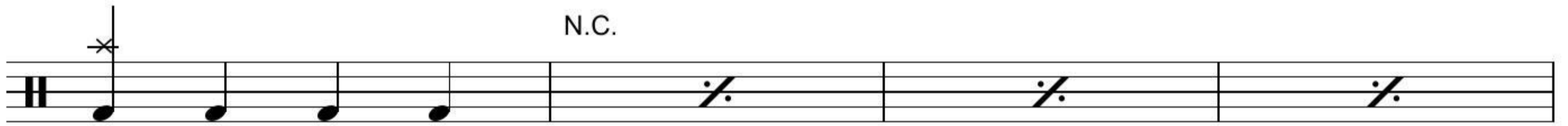
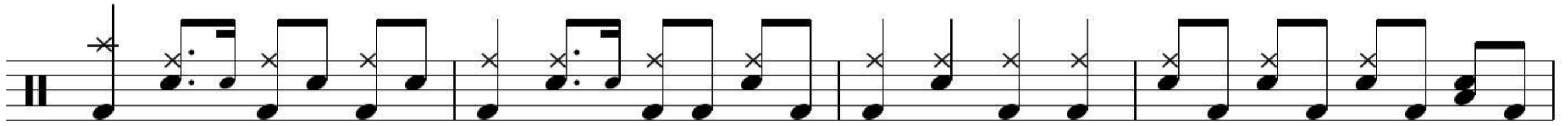
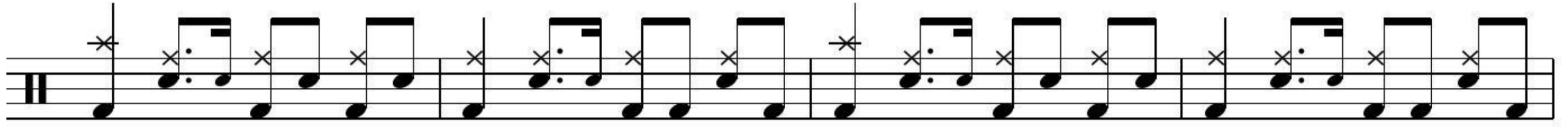
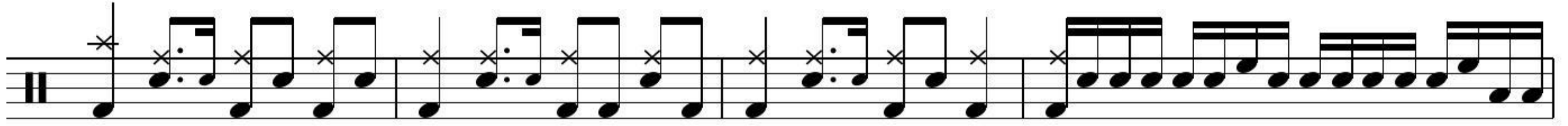
BREAKDOWN



CHORUS



4 BRICK BY BORING BRICK



OUTRO



Fine