

ALL RIGHT NOW

FREE

♩ = 122 INTRO

NC

Musical notation for the first line of the Intro section, featuring a treble clef, a 4/4 time signature, and a key signature of one sharp (F#). The notation includes a series of eighth notes with 'x' marks above them, followed by a measure with a slash and a dot, and two more measures with slashes and dots.

Musical notation for the second line of the Intro section, featuring a treble clef and a key signature of one sharp (F#). The notation includes a series of eighth notes with 'x' marks above them, followed by a measure with a slash and a dot, and two more measures with slashes and dots.

VERSE

Musical notation for the first line of the Verse section, featuring a treble clef and a key signature of one sharp (F#). The notation includes a series of eighth notes with 'x' marks above them, followed by a measure with a slash and a dot, and two more measures with slashes and dots.

Musical notation for the second line of the Verse section, featuring a treble clef and a key signature of one sharp (F#). The notation includes a series of eighth notes with 'x' marks above them, followed by a measure with a slash and a dot, and two more measures with slashes and dots. The second measure is marked with a first ending bracket and a first ending note, and the third measure is marked with a second ending bracket and a second ending note.

CHORUS

Musical notation for the first line of the Chorus section, featuring a treble clef and a key signature of one sharp (F#). The notation includes a series of eighth notes with 'x' marks above them, followed by a measure with a slash and a dot, and two more measures with slashes and dots.

Musical notation for the second line of the Chorus section, featuring a treble clef and a key signature of one sharp (F#). The notation includes a series of eighth notes with 'x' marks above them, followed by a measure with a slash and a dot, and two more measures with slashes and dots.

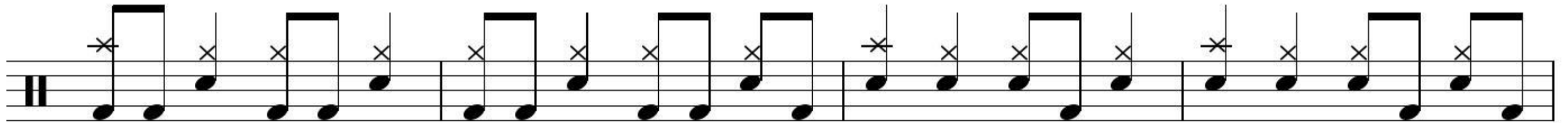
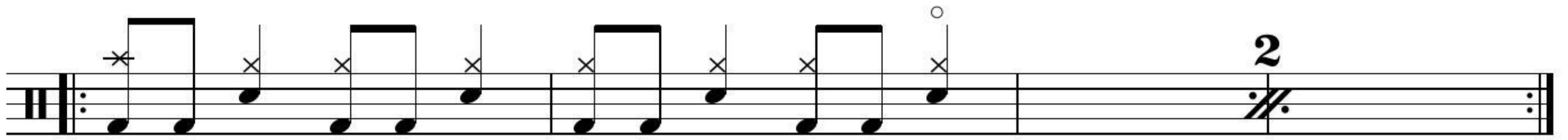
D.S. al Coda

Musical notation for the third line of the Chorus section, featuring a treble clef and a key signature of one sharp (F#). The notation includes a series of eighth notes with 'x' marks above them, followed by a measure with a slash and a dot, and two more measures with slashes and dots.

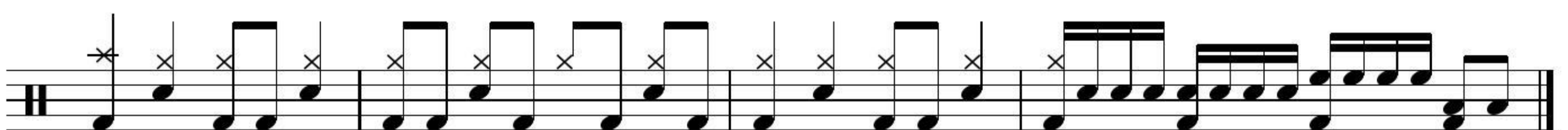
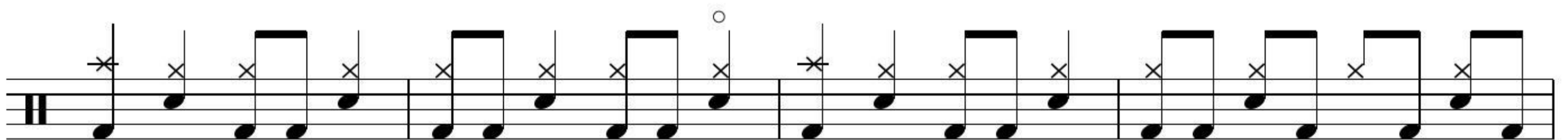
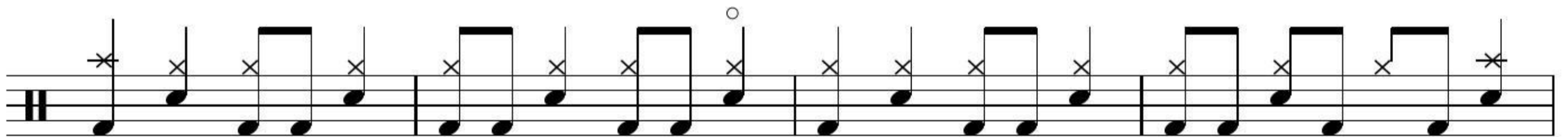
GUITAR SOLO

Musical notation for the first line of the Guitar Solo section, featuring a treble clef and a key signature of one sharp (F#). The notation includes a series of eighth notes with 'x' marks above them, followed by a measure with a slash and a dot, and two more measures with slashes and dots.

PLAY 6 MORE



CHORUS



Repeat to fade